

広島大学学術情報リポジトリ  
Hiroshima University Institutional Repository

|            |  |
|------------|--|
| Title      | Difference in NaCl tolerance of membrane-bound 5' - nucleotidases purified from deep-sea and brackish water <i>Shewanella</i> species  |
| Author(s)  | Kuribayashi, Taka-aki; Fujii, Sotaro; Masanari, Misa; Yamanaka, Masaru; Wakai, Satoshi; Sambongi, Yoshihiro  |
| Citation   | Extremophiles , 21 (2) : 357 - 368   |
| Issue Date | 2017-01-03   |
| DOI        | <a href="https://doi.org/10.1007/s00792-016-0909-8">10.1007/s00792-016-0909-8</a>  |
| Self DOI   |  |
| URL        | <a href="https://ir.lib.hiroshima-u.ac.jp/00048645">https://ir.lib.hiroshima-u.ac.jp/00048645</a>  |
| Right      | © Springer Japan 2016<br>This is a post-peer-review, pre-copyedit version of an article published in Extremophiles. The final authenticated version is available online at: <a href="https://doi.org/10.1007/s00792-016-0909-8">https://doi.org/10.1007/s00792-016-0909-8</a><br>This is not the published version. Please cite only the published version. この論文は出版社版ではありません。引用の際には出版社版をご確認、ご利用ください。 |
| Relation   |  |



Draft Manuscript for Review

**Difference in NaCl tolerance of membrane-bound 5'-nucleotidases purified from deep-sea and brackish water *Shewanella* species**

|                               |   |
|-------------------------------|---|
| Journal:                      | <i>Extremophiles</i>  |
| Manuscript ID                 | EXT-16-Oct-0201.R1  |
| Manuscript Type:              | Original Paper  |
| Date Submitted by the Author: | 05-Dec-2016   |
| Complete List of Authors:     | Kuribayashi, Taka-aki ; Hiroshima University, Graduate School of Biosphere Science<br>Fujii, Sotaro ; Hiroshima University, Graduate School of Biosphere Science<br>Masanari, Misa<br>Yamanaka, Masaru ; Nara Sentan Kagaku Gijutsu Daigakuin Daigaku<br>Wakai, Satoshi; Kobe University, Graduate School of Science, Technology, and Innovation<br>Sambongi, Yoshihiro; Hiroshima University, Graduate School of Biosphere Science |
| Keyword:                      | Deep-sea, Growth environment, 5'-Nucleotidase, NaCl tolerance, <i>Shewanella</i>  |
|                               |   |

SCHOLARONE™  
Manuscripts

1  
2  
3  
4  
5  
6 **Difference in NaCl tolerance of membrane-bound 5'-nucleotidases purified from**  
7  
8 **deep-sea and brackish water *Shewanella* species**  
9

10  
11  
12 **Taka-aki Kuribayashi<sup>1</sup> · Sotaro Fujii<sup>1</sup> · Misa Masanari<sup>1</sup> · Masaru Yamanaka<sup>2</sup> ·**  
13  
14 **Satoshi Wakai<sup>3,\*</sup> · Yoshihiro Sambongi<sup>1,\*</sup>**  
15

16  
17  
18  
19 <sup>1</sup>Graduate School of Biosphere Science, Hiroshima University, 1-4-4 Kagamiyama,  
20  
21 Higashi-Hiroshima, Hiroshima 739-8528, Japan

22  
23 <sup>2</sup>Graduate School of Materials Science, Nara Institute of Science and Technology, 8916-5  
24  
25 Takayama, Ikoma, Nara 630-0192, Japan

26  
27 <sup>3</sup>Graduate School of Science, Technology, and Innovation, Kobe University, 1-1  
28  
29 Rokkodai, Kobe, Hyogo 657-8501, Japan  
30

31  
32  
33  
34 \*Corresponding authors. Tel. and Fax: (+81) 78 8036462, E-mail:

35  
36 wakaists@pegasus.kobe-u.ac.jp and Tel. and Fax: (+81) 82 4247924, E-mail:

37  
38 sambongi@hiroshima-u.ac.jp  
39  
40  
41

42  
43 **Abbreviations**

44  
45 NTase            5'-nucleotidase

46  
47 SANTase        *Shewanella amazonensis* 5'-nucleotidase

48  
49 SVNTase        *Shewanella violacea* 5'-nucleotidase  
50  
51  
52  
53  
54  
55  
56  
57  
58  
59  
60

1  
2  
3  
4  
5  
6 **Abstract** *Shewanella* species are widely distributed in sea, brackish, and fresh  
7  
8 water areas, growing psychrophilically or mesophilically, and piezophilically or  
9  
10 piezo-sensitively. Here, membrane-bound 5'-nucleotidases (NTases) from deep-sea  
11  
12 *Shewanella violacea* and brackish water *Shewanella amazonensis* were examined from  
13  
14 the aspect of NaCl tolerance in order to gain an insight into protein stability against salt.  
15  
16 Both NTases were single polypeptides with molecular masses of ~59 kDa, as determined  
17  
18 on mass spectroscopy. They similarly required 10 mM MgCl<sub>2</sub> for their activities, and  
19  
20 they exhibited the same pH dependency and substrate specificity for 5'-nucleotides.  
21  
22 However, *S. violacea* 5'-nucleotidase (SVNTase) was active enough in the presence of  
23  
24 2.5 M NaCl, whereas *S. amazonensis* 5'-nucleotidase (SANTase) exhibited significantly  
25  
26 reduced activity with the same concentration of the salt. Although SVNTase and  
27  
28 SANTase exhibited high sequence identity (69.7%), differences in the ratio of acidic to  
29  
30 basic amino acid residues and the number of potential salt bridges maybe being  
31  
32 responsible for the difference in the protein stability against salt. 5'-Nucleotidases from  
33  
34 these *Shewanella* species will provide useful information regarding NaCl tolerance,  
35  
36 which may be fundamental for understanding bacterial adaptation to growth  
37  
38 environments.  
39  
40  
41  
42  
43  
44

45 **Keywords** Deep-sea · Growth environment · 5'-Nucleotidase · NaCl tolerance ·

46  
47 *Shewanella*  
48  
49  
50  
51  
52  
53  
54  
55  
56  
57  
58  
59  
60

## Introduction

*Shewanella* species belonging to class *Gammaproteobacteria* are widely distributed in sea, brackish, and fresh water areas, growing psychrophilically or mesophilically, and piezophilically or piezo-sensitively. *Shewanella* species are also known to utilize a wide range of extracellular organic and inorganic compounds in both soluble and insoluble forms, which makes these widely distributed species important players in biogeochemical cycles (Hau and Gralnick 2007). Such diversity has evoked our interest in using *Shewanella* for the bioremediation of contaminated water and the development of microbial fuel cells.

The wide distribution of *Shewanella* species also makes them suitable bacteria for investigating not only the enzymatic reactions that drive biogeochemical cycles (Falkowski et al. 2008), but also the protein stability mechanism as to such various environments. In this context, we have carried out protein thermal stability studies using cytochromes *c* isolated from a variety of *Shewanella* species (Ogawa et al. 2007; Takenaka et al. 2010; Masanari et al. 2011; Kato et al. 2015). Recently, we found a positive correlation between the optimal growth pressures of four *Shewanella* species and the stabilities of their highly homologous cytochromes *c*<sub>5</sub> (Masanari et al. 2014; Masanari et al. 2016). As *Shewanella* cytochromes *c*<sub>5</sub> are monomeric proteins, we have gained fundamental insights into the structure and stability relationships in a single polypeptide.

5'-Nucleotidase (NTase) is a widespread enzyme and appears to function as a nutrient-acquiring enzyme at the periphery of bacteria. It is also an enzyme involved in extracellular nucleotide signaling and degradation in mammals (Yegutkin et al. 2006; Pettengill et al. 2013) and in human pathogenic bacteria (Zagursky et al. 2000; Firon et al.

1  
2  
3  
4  
5  
6 2014). *Escherichia coli* NTase (ECNTase) has been extensively characterized as a  
7  
8 model protein for bacterial and mammal homologues. Its crystal structure shows that it  
9  
10 is a monomeric two-domain protein (Knöfel and Sträter 1999), which undergoes  
11  
12 hinge-bending domain rotation during the catalytic cycle (Knöfel and Sträter 2001).  
13  
14 Therefore, similar to and in addition to *Shewanella* cytochromes *c*<sub>5</sub>, NTases from  
15  
16 *Shewanella* species are useful target proteins for investigating relationships among  
17  
18 structure, stability, and enzymatic activity.  
19

20  
21 NTases from *Vibrio* species have unveiled basic enzymology such as substrate  
22  
23 and cation specificities (Bengis-Garber and Kushner 1981; Itami et al. 1989). As most  
24  
25 *Vibrio* species had been isolated from sea water environments, the effects of salts such as  
26  
27 NaCl on their NTase activities were investigated, but a comparative study on the salt  
28  
29 tolerance of the enzymes has not been performed. Taking account of the wide  
30  
31 distribution of *Shewanella* species, a molecular insight into the salt tolerance of  
32  
33 *Shewanella* NTases will be of interest. So far, fresh water *Shewanella oneidensis* NTase  
34  
35 has only been characterized at the cellular and crude extract levels, its importance in  
36  
37 ecology and physiology being revealed (Pinchuk et al. 2008; Covington et al. 2010).  
38  
39 However, little is known about the salt tolerance of purified *Shewanella* NTases obtained  
40  
41 from various environments.  
42  
43

44  
45 In this study, we purified two homologous membrane-bound NTases. One  
46  
47 (SVNTase) was from deep-sea psychrophilic *Shewanella violacea* strain DSS12 isolated  
48  
49 from sea water sediments of the Ryukyu Trench, which grows optimally with ~0.51 M  
50  
51 NaCl, but shows no growth in the absence of NaCl (Nogi et al. 1998). The other one  
52  
53 (SANTase) is from brackish water mesophilic *Shewanella amazonensis* strain SB2B  
54  
55 isolated from deposits of the Amazon River Delta, which grows optimally with ~0.2 M  
56  
57  
58  
59  
60

1  
2  
3  
4  
5  
6 NaCl and even grows in the absence of NaCl (Venkateswaran et al. 1999), but not with  
7  
8 ~0.51 M (Venkateswaran et al. 1998). These growth properties related to the NaCl  
9  
10 concentration fit well with the previous definitions of 'halophilic' and 'halotolerant', which  
11  
12 are defined as ones that optimally grow with more than 0.2 M NaCl and 0–0.2 M,  
13  
14 respectively (Venkateswaran et al. 1999). The NTases of *S. violacea* and *S. amazonensis*  
15  
16 derived from such distinctive salt environmental niches were both characterized in this  
17  
18 study. Although they exhibited high amino acid sequence identity (69.7%), they showed  
19  
20 a remarkable difference in NaCl tolerance, which will be discussed as to protein stability  
21  
22 against salt. The findings can be expanded to bacterial environmental adaptation.  
23  
24  
25  
26  
27  
28  
29

## 30 **Materials and methods**

### 31 32 33 **Preparation of *S. violacea* and *S. amazonensis* membranes**

34  
35  
36  
37  
38 *S. violacea* DSS12 was grown in liquid marine broth 2216 (Difco) routinely containing  
39  
40 0.33 M NaCl at 8 °C as described previously (Nogi et al. 1998). *S. amazonensis* SB2B  
41  
42 was grown in LB broth routinely containing 0.17 M NaCl at 37 °C as described  
43  
44 previously (Venkateswaran et al. 1998). Frozen cells (10 g) of these species were  
45  
46 suspended in 30 ml of TKG buffer [20 mM Tris-HCl (pH 8.0, adjusted at 4 °C), 140 mM  
47  
48 KCl, 10% (v/v) glycerol, 0.5 mM phenylmethylsulfonyl fluoride, 5 µg ml<sup>-1</sup> leupeptin, 5  
49  
50 µg ml<sup>-1</sup> pepstatin A, and 1 µg ml<sup>-1</sup> DNase I]. The following steps were performed at 4  
51  
52 °C. Cells were disrupted by four passages through a precooled French pressure cell at  
53  
54 147 MPa. Then streptomycin sulfate was added to each cell extract, which was gently  
55  
56  
57  
58  
59  
60

1  
2  
3  
4  
5  
6 stirred for 15 min on ice, followed by centrifugation ( $12,600 \times g$  for 10 min) to remove  
7  
8 unbroken cell debris and the nucleic acid moiety; this step was repeated twice.  
9

10 The membrane protein fractions derived from the cell extracts were precipitated  
11  
12 by centrifugation at  $200,000 \times g$  for 70 min, and then washed with membrane wash buffer  
13  
14 [50 mM Tris-HCl (pH 8.0, adjusted at  $4^\circ\text{C}$ ), 2 mM  $\text{MgCl}_2$ , 1 mM dithiothreitol, and 10%  
15  
16 (v/v) glycerol], followed by centrifugation at  $220,000 \times g$  for 80 min. The washed  
17  
18 membranes were resuspended in the membrane wash buffer to a protein concentration of  
19  
20  $\sim 30 \text{ mg ml}^{-1}$ , and then stored at  $-80^\circ\text{C}$  or used for ATP hydrolysis assaying and  
21  
22 purification of NTase.  
23  
24

### 25 26 27 **Purification of NTases from *S. violacea* and *S. amazonensis* membranes**

28  
29  
30  
31  
32 Suspensions of membrane protein fractions from *S. violacea* and *S. amazonensis* cells  
33  
34 ( $\sim 20 \text{ mg protein ml}^{-1}$ ) were supplemented with 2% (w/v) detergent, **Octaethylene glycol**  
35  
36 **monododecyl ether ( $\text{C}_{12}\text{E}_8$ , Tokyo Chemical Industry)** After 15 min stirring at  $4^\circ\text{C}$ ,  
37  
38 each suspension was centrifuged at  $220,000 \times g$  for 90 min to separate the solubilized  
39  
40 proteins.  
41  
42

43 The solubilized protein fractions were loaded onto a HiTrap Q column ( $1.6 \times 2.5$   
44  
45 cm, **GE Healthcare**) equilibrated with buffer A [20 mM Tris-HCl (pH 8.0, adjusted at  $30$   
46  
47  $^\circ\text{C}$ ), 2 mM  $\text{MgCl}_2$ , 1 mM dithiothreitol, 10% (w/v) glycerol, and 0.1%  $\text{C}_{12}\text{E}_8$ ] at room  
48  
49 temperature. The column was first washed with 20 ml of the same buffer, and then the  
50  
51 protein fractions exhibiting NTase activity (examined by ATP hydrolysis activity  
52  
53 assaying as described below) were eluted with a linear gradient of NaCl (0.3 to 1.0 M for  
54  
55 *S. violacea* membrane and 0.2 to 1.0 M for *S. amazonensis* membrane) in the same buffer.  
56  
57  
58  
59  
60



1  
2  
3  
4  
5  
6 This HiTrap Q column chromatography step was repeated. The resulting protein  
7  
8 fractions were then loaded onto a Superdex 200 column (1.6 × 60 cm, GE Healthcare)  
9  
10 equilibrated with buffer A without dithiothreitol containing 0.15 M NaCl. The fractions  
11  
12 exhibiting ATP hydrolysis activity were pooled and concentrated with an Amicon  
13  
14 Ultra-15 10K (Millipore).  
15  
16

### 17 18 19 **Protein analysis**

20  
21  
22  
23 Protein concentrations were determined by the method of Lowry et al. (1951) with bovine  
24  
25 serum albumin as the standard. The purity of an NTase was routinely checked by  
26  
27 sodium dodecyl sulfate polyacrylamide gel electrophoresis (SDS-PAGE) with 15%  
28  
29 polyacrylamide using the buffer system described by Laemmli (1970). The purified  
30  
31 NTase protein bands separated on SDS-PAGE were electrophoretically transblotted onto  
32  
33 a polyvinylidene fluoride membrane (Millipore) and visualized with Coomassie Brilliant  
34  
35 Blue G-250. The protein band corresponding to the NTase was excised and directly  
36  
37 subjected to N-terminal sequencing with an automatic peptide sequencer, Procise 492HT  
38  
39 (Applied Biosystems).  
40  
41

42  
43 Mass spectroscopy was also performed for the purified NTases to determine their  
44  
45 molecular masses. The proteins were spotted on the target plates after mixing with the  
46  
47 matrix solution, i.e., saturated sinapic acid in 0.1% (v/v) TFA and 40% (v/v) acetonitrile,  
48  
49 and then positive ion mass spectra were obtained with a MALDI-TOF mass spectrometer,  
50  
51 Autoflex II (Bruker).  
52  
53  
54  
55  
56  
57  
58  
59  
60

### Activity measurements

ATP hydrolysis activity assaying during the protein purification process was routinely performed at 30 °C in a mixture comprising 20 mM Tris-HCl (pH 8.0), 10 mM MgCl<sub>2</sub>, and 1 µg ml<sup>-1</sup> bovine serum albumin, 0.6 ml, according to the modified method of Fiske and Subbarow (1925). In preliminary experiments for the membrane fractions, the proteins from *S. violacea* and *S. amazonensis* exhibited maximal ATP hydrolysis activity with 2.0 M and 0 M KCl, respectively, these concentration being therefore used for the respective reaction solutions during purification procedures. The reaction was initiated by adding 4 mM disodium ATP and terminated by the addition of 0.33 N trichloroacetic acid. ATP hydrolysis activity was calculated by means of a colorimetric assay, at an absorbance of 740 nm, that estimates the amount of Pi liberated from ATP. One unit of ATP hydrolysis activity was defined as the amount of enzyme that liberated 1 µmol of Pi per min.

For the purified SVNTase and SANTase (1.0 µg protein), ATP hydrolysis activity was examined at various pHs using 20 mM morpholinepropanesulfonic acid-NaOH buffer (pH 5.0–7.0, adjusted at 25 °C), 20 mM Tris-HCl buffer (pH 7.0–9.0, adjusted at 25 °C), or 20 mM glycine-NaOH buffer (pH 9.0–11.0, adjusted at 25 °C) at 30 °C in the presence of 10 mM MgCl<sub>2</sub>. At the resulting optimal pH, the ATP hydrolysis activity of each purified enzyme was further examined for divalent cation dependency using 2 or 10 mM MgCl<sub>2</sub>, MnCl<sub>2</sub>, CaCl<sub>2</sub>, and ZnCl<sub>2</sub> at 30 °C in the buffer containing 20 mM Tris-HCl (pH 8.0).

Substrate specificity was also examined at 30 °C with 5'-ATP, 5'-AMP, 5'-GTP, and 3'-AMP in the presence of 10 mM MgCl<sub>2</sub> in the buffer containing 20 mM Tris-HCl

1  
2  
3  
4  
5  
6 (pH 8.0). The procedure for the activity measurements involving these substrates was  
7  
8 the same as that used for the ATP hydrolysis activity described above. Under the  
9  
10 conditions of 10 mM MgCl<sub>2</sub> in the buffer containing 20 mM Tris-HCl (pH 8.0), the ATP  
11  
12 hydrolysis activities of the two purified enzymes were further measured in the  
13  
14 temperature range of 10 to 60 °C in order to determine the optimal reaction temperature.  
15  
16 Finally, the salt dependency of the ATP hydrolysis activities of the purified SVNTase and  
17  
18 SANTase were measured with 0–2.5 M NaCl and 10 mM MgCl<sub>2</sub> in the buffer containing  
19  
20 20 mM Tris-HCl (pH 8.0) at 30 °C.  
21  
22  
23  
24  
25  
26

## 27 **Results and discussion**

### 28 **Purification of NTases from the *S. violacea* and *S. amazonensis* membranes**

29  
30  
31  
32 Preliminary experiments revealed that the ATP hydrolysis activities of *S. violacea* and *S.*  
33  
34 *amazonensis* membranes were maximal with and without 2.0 M KCl, respectively, in the  
35  
36 presence of 10 mM MgCl<sub>2</sub> and 4 mM ATP in the buffer containing 20 mM Tris-HCl (pH  
37  
38 8.0) at 30 °C. Therefore, these conditions were used for monitoring ATP hydrolysis  
39  
40 activity during enzyme purification. Starting from ~400 mg of *S. violacea* and *S.*  
41  
42 *amazonensis* total membrane proteins, 0.3 mg of each NTase was obtained at the end of  
43  
44 the purification procedure (Table 1). The final SVNTase and SANTase preparations  
45  
46 exhibited specific activities of 65 and 175 units (mg protein)<sup>-1</sup>, respectively. The  
47  
48 difference in specific activity may reflect the intrinsic properties of these enzymes,  
49  
50 although the SVNTase preparation contained minor impurities whereas SANTase one did  
51  
52  
53  
54  
55  
56  
57  
58  
59  
60

1  
2  
3  
4  
5  
6 **not** (Lanes 5 in Fig. 1ab), thus the former exhibited lower specific activity than the latter.  
7

8         The protein bands separated by SDS-PAGE, which appeared to correspond to  
9  
10 SVNTase and SANTase, exhibited molecular masses of ~60 kDa (Fig. 1ab). Mass  
11 spectroscopy analysis consistently confirmed their molecular masses: ~59,200 Da for  
12 SVNTase and ~59,600 Da for SANTase (Fig. 1cd). These molecular masses were  
13  
14 similar to those reported previously for membrane-bound or periplasmic NTases isolated  
15  
16 from other bacteria (Tamao et al. 1991).  
17  
18  
19  
20  
21  
22

### 23 **Calculated molecular masses of SVNTase and SANTase**

24  
25  
26

27 The N-terminal amino acid residues of the SVNTase and SANTase proteins separated by  
28 SDS-PAGE (Fig. 1ab) could not be determined, indicating that their N-terminal residues  
29 were **modified**. Further analysis revealed sequences XGSDNDD and XMDAD for  
30 SVNTase and SANTase, respectively. These sequences except for the N-termini exactly  
31 corresponded with those of mature NTases deduced from the respective gene sequences  
32 deposited in genome databases (Fig. 2), **which exhibited that the N-termini were Cys**  
33 **residues**. The mature SVNTase and SANTase **including N-terminal Cys** consisted of  
34 549 and 551 amino acids, respectively. From the entire primary structures of the mature  
35 proteins, the molecular masses of SVNTase and SANTase were calculated to be 58,828  
36 and 59,194 Da, respectively. The differences between the mass spectroscopic molecular  
37 masses (Fig. 1cd) and the ones calculated from the amino acid sequences, about 400 Da,  
38 should be due to **modification of the side chain of N-terminal Cys residue with lipid**.  
39  
40  
41  
42  
43  
44  
45  
46  
47  
48  
49  
50  
51  
52  
53  
54  
55  
56  
57  
58  
59  
60

**The modification may not occur at the amino group, consistent with the previous study**  
**(Weyer et al. 1987), thus Edman degradation proceeded during N-terminal peptide**

sequencing.

### Localization of SVNTase and SANTase

The N-termini of both mature SVNTase and SANTase comprised a Cys residue in the deduced amino acid sequences, which were preceded by a Sec-dependent periplasmic targeting peptide of 20 amino-acid residues (Fig. 2). These results indicate that both NTases are synthesized as precursors and that their signal peptides are cleaved off during translocation to the periplasmic side of membranes. Although the NTases were successfully purified from the membrane protein fractions of *S. violacea* and *S. amazonensis* in this study, the whole amino acid sequences of the mature proteins appeared to be soluble without any membrane-embedded helices with the SOSUI program (Hirokawa et al. 1998). Thus, both NTases may be lipoproteins that are anchored to membranes through modified N-terminal Cys residues. Mature N-terminal Cys residues are also found in various lipoproteins anchored to membranes through the lipid portion attached to their Cys residues, as observed for *Vibrio parahaemolyticus* NTase (Tamao et al. 1991), which was also purified from the membrane protein fraction, similar to in the present study.

Previously, the mature *S. oneidensis* NTase, which also contains an N-terminal Cys residue similar to SVNTase and SANTase, and exhibits 64.3 and 76.8% sequence identities with the respective NTases, has been detected in periplasmic (Covington et al. 2010) and extracellular (Pinchuk et al. 2008) protein fractions on FAD hydrolysis activity assaying and proteome analysis, respectively. These enzyme location results are not consistent with our present results; it is unknown whether or not this is due to the

1  
2  
3  
4  
5 differences in the species, culture conditions, and/or protein molecules examined.

6  
7  
8 However, at least SVNTase and SANTase from the two *Shewanella* species were  
9  
10 examined at a substantial level using purified enzymes, giving consistent membrane  
11  
12 localization.

### 13 14 15 16 17 18 19 **Similarity between the purified SVNTase and SANTase activities**

20  
21  
22 Enzymatic properties were analyzed and compared using the purified SVNTase and  
23  
24 SANTase. The optimal pH for the ATP hydrolysis activity of the purified SVNTase and  
25  
26 SANTase was **between 8.0 and 9.0** in the presence of 10 mM MgCl<sub>2</sub> at 30 °C (Fig. 3a).  
27  
28 This **range of** optimal pH obtained in the present study is also consistent with those of  
29  
30 NTases purified from other bacteria (Bengis-Garber and Kushner 1981; Itami et al. 1989).  
31  
32

33  
34 Both purified NTases similarly showed the highest activities with 10 mM MgCl<sub>2</sub>,  
35  
36 not with 2 mM, at pH 8.0 (Fig. 3b). Requirement of 10 mM MgCl<sub>2</sub> has also been  
37  
38 observed for *Vibrio costicola* (renamed *Salinivibrio costicola*) NTase (Bengis-Garber and  
39  
40 Kushner 1981). With 10 mM MnCl<sub>2</sub>, significant activities, although less than those with  
41  
42 10 mM MgCl<sub>2</sub>, were detected for SVNTase and SANTase, but not with CaCl<sub>2</sub> and ZnCl<sub>2</sub>.  
43  
44 These divalent cation specificities are also consistent with the previous results obtained  
45  
46 for other bacterial NTases (Bengis-Garber and Kushner 1981; Itami et al. 1989; Sakai et  
47  
48 al. 1989; Zagursky et al. 2000). Similar to ATP hydrolysis, 5'-AMP and 5'-GTP could  
49  
50 be hydrolyzed by the purified SVNTase and SANTase, but 3'-AMP could not (Fig. 3c).  
51  
52 In summary, the two NTases purified from *S. violacea* and *S. amazonensis* membranes  
53  
54 exhibited the same enzymatic properties from the aspects of the dependencies as to pH  
55  
56  
57  
58  
59  
60

1  
2  
3  
4  
5  
6 and divalent cations, and substrate specificity, consistent with typical features of bacterial  
7  
8 NTases, as reported previously (Itami et al. 1989; Sakai et al. 1989).  
9

### 10 11 12 **Difference between the purified SVNTase and SANTase activities** 13

14  
15  
16 As the two source bacteria, *S. violacea* and *S. amazonensis*, have optimal growth  
17  
18 temperatures, 8 °C for the former and 37 °C for the latter, the temperature dependencies  
19  
20 of the ATP hydrolysis activities of the two NTases purified from them were examined.  
21  
22 In the buffer of 20 mM Tris-HCl (pH 8.0 at 25 °C) with 10 mM MgCl<sub>2</sub>, maximal ATP  
23  
24 hydrolysis activities were obtained at 30 °C for SVNTase and 45 °C for SANTase (Fig.  
25  
26 4a), reflecting the difference in the optimal growth temperatures of the source bacteria.  
27  
28

29  
30 NaCl concentration dependencies were also examined under the same buffer  
31  
32 conditions as those used for the temperature dependency experiments at 30 °C.  
33  
34 SVNTase exhibited almost the same level of ATP hydrolysis activity with 2.0–2.5 M  
35  
36 NaCl of that with 0 M NaCl (Fig. 4b), but showing a slightly inhibitory effect of NaCl.  
37  
38 The inhibitory effect was prominent for SANTase, which exhibited ~30% activity with  
39  
40 2.0–2.5 M NaCl of that with 0 M (Fig. 4b). Therefore, the SVNTase activity is clearly  
41  
42 more tolerant of NaCl than that of SANTase. This difference also reflects the growth  
43  
44 environments of the source bacteria, i.e., *S. violacea* optimally grows with a high NaCl  
45  
46 concentration compared with *S. amazonensis*, both being defined as 'halophilic' and  
47  
48 'halotolerant' in the previous literature, respectively (Venkateswaran et al. 1999).  
49  
50  
51  
52  
53  
54  
55  
56  
57  
58  
59  
60

## Primary structural insight into the difference in NaCl tolerance between SVNTase and SANTase

The whole amino acid sequences of mature SVNTase and SANTase were then compared with that of well-characterized ECNTase. High overall sequence identity (69.7%) was observed between SVNTase and SANTase, confirming their phylogenetic proximity. Both enzymes exhibited high sequence identities (nearly 50%) with that of ECNTase. Cys-258 and Cys-275 that form a disulfide bond in ECNTase (Knöfel and Sträter 1999) were found in SVNTase and SANTase (Fig. 2; for convenience, the amino acid numbering system for ECNTase including its signal peptide is adopted throughout the text). His-117 and Asp-120 forming a catalytic Asp-His dyad in the active site found in ECNTase were also conserved in the present *Shewanella* enzymes. Gly-407, Phe-429, and Phe-498, which interact with the substrate adenine ring, were all conserved in the present *Shewanella* enzymes. In addition, two metal ions were found in the ECNTase crystal. The crystal structure further exhibited metal ion binding residues (Asp-41, His-43, Asp-84, Asn-116, His-217, His-252, and Gln-254), which were also conserved in the present *Shewanella* enzymes. All these findings together indicate that the SVNTase and SANTase have structures and catalytic mechanisms similar to those of ECNTase.

Hereafter, we will discuss the difference in protein stability as to NaCl between SVNTase and SANTase from the aspect of primary structure. In general, extremely halophilic enzymes that act at molar order salt concentrations exhibit unique molecular features (DasSarma and DasSarma 2015), e.g., a more than 20% content of acidic amino acid residues (Fukuchi et al. 2003). In order to determine whether or not there is a similar tendency for the NaCl-tolerant SVNTase as compared with SANTase, we then



1  
2  
3  
4  
5 investigated their primary structures. The resulting whole mature sequences (Fig. 2)  
6 demonstrated that mature SVNTase contained 83 acidic residues (Asp and Glu), and  
7 mature SANTase 79 acidic residues. Although the former enzyme contained more  
8 acidic residues than the latter, the content of acidic residues of SVNTase (15.1%) was far  
9 less than those of extremely halophilic enzymes (usually over 20%, [DasSarma and](#)  
10 [DasSarma 2015; Fukuchi et al. 2003](#)), which might contribute to the stabilization of  
11 extremely halophilic enzymes under molar order salt concentrations. Therefore, the  
12 absolute content of acidic residues in SVNTase may not contribute to its salt stability, as  
13 generally observed in extremely halophilic enzymes.  
14  
15  
16  
17  
18  
19  
20  
21  
22  
23  
24

25 However, SVNTase contained 45 basic residues (Arg, His, and Lys), resulting in  
26 a ratio of acidic to basic residues of 1.84, which was higher than that of SANTase (ratio  
27 of 1.49) that had 53 basic residues. A similar tendency for an excess of acidic residues  
28 being compensated for by fewer basic residues was also indicated for other enzymes from  
29 halophiles as a molecular signature of high-salt environmental adaptation through  
30 genome-wide and environmental surveys ([Fukuchi et al. 2003; Paul et al. 2008; Rhodes et](#)  
31 [al. 2010](#)). Such a proteomic feature may be related with the stability and functionality in  
32 high-salt environments, for which biochemical evidence could be obtained in the present  
33 study using SVNTase and SANTase.  
34  
35  
36  
37  
38  
39  
40  
41  
42  
43  
44  
45  
46

### 47 **Three-dimensional structural insight into the difference in protein stability as to** 48 **NaCl between SVNTase and SANTase** 49

50  
51  
52 Since the amino acid sequences of SVNTase and SANTase were more than 50% identical  
53 to that of ECNTase, their three-dimensional model structures could be successfully  
54  
55  
56  
57  
58  
59  
60

1  
2  
3  
4  
5  
6 simulated by using the crystal structure of substrate-bound ECNTase (PDB ID: 1HPU) as  
7  
8 a template by the SWISS-MODEL workplace (Biasini et al. 2014). The simulated main  
9  
10 chain structures of SVNTase and SANTase showed a major difference in the number of  
11  
12 residues potentially forming a salt bridge.  
13

14 In the model structure of SVNTase (Fig. 5a), nine salt bridges were formed  
15  
16 between acidic and basic amino acid residues; Glu-195 and Arg-150, Glu-195 and  
17  
18 Lys-198, Asp-547 and Arg-387, Asp-479 and Lys-467, Asp-223 and Arg-238, Glu-290  
19  
20 and Lys-293, Asp-278 and His-220, Asp-64 and Lys-60, and Asp-153 and Lys-156. In  
21  
22 contrast, in the model structure of SANTase (Fig. 5b), 14 salt bridges were formed;  
23  
24 Glu-186 and Lys-145, Asp-223 and Arg-238, Asp-278 and His-220, Glu-290 and Lys-293,  
25  
26 Glu-48 and Lys-346, Asp-64 and Lys-60, Asp-361 and Arg-421, Asp-528 and Lys-533,  
27  
28 Asp-51 and Lys-332, Asp-547 and Arg-387, Glu-195 and Lys-198, Asp-153 and Lys-156,  
29  
30 Glu-69 and Arg-297, and Asp-299 and Arg-297. These results of comparison of the  
31  
32 number of potential salt bridges implied that the lower the number is, as observed in  
33  
34 SVNTase, the less the contribution of salt bridges to the protein stability is. Therefore,  
35  
36 SANTase, which contained a higher number of potential salt bridges than that in  
37  
38 SVNTase, exhibited vulnerability in the presence of high concentrations of NaCl, whose  
39  
40 ions may be able to reduce the strength of the salt bridges, thus resulting in reduced  
41  
42 activity, as observed in Fig. 4b. *Vice versa*, SVNTase, which contained a lower number  
43  
44 of potential salt bridges, exhibited high NaCl tolerance compared with SANTase, because  
45  
46 the salt bridges might contribute less to the stability of its tertiary structure.  
47  
48  
49  
50  
51  
52  
53  
54  
55  
56  
57  
58  
59  
60

### Structural insights into other *Shewanella* NTases

The issues of the differences in the ratio of acidic to basic amino acid residues and the number of potential salt bridges between SVNTase and SANTase were expanded to other *Shewanella* NTases. Based on information obtained from the literature, the *Shewanella* species listed in Table 2 were classified into two groups; one including *S. violacea* could not grow with 0 M NaCl and while the other one including *S. amazonensis* could. In addition, the former *Shewanella* species required a higher NaCl concentration than the latter for optimal growth. These growth properties regarding halophilicity more or less fitted well with the definitions of 'halophilic' and 'halotolerant', as described previously (Venkateswaran et al. 1999).

These *Shewanella* species each had homologous NTases that consisted of ~550 residues in mature forms exhibiting more than 64% and up to 89% sequence identity with that of SVNTase (Table 2). Using these amino acid sequences of the mature forms, the numbers of acidic and basic residues were determined, and the ratios of acidic to basic residues were calculated as described for the SVNTase and SANTase sequences. It was revealed that these NTases could also be classified into two types (Table 2). The NTases derived from 'halophilic' *Shewanella* species including SVNTase showed an average ratio of  $1.78 \pm 0.10$  and those from 'halotolerant' ones including SANTase one of  $1.25 \pm 0.14$ , where  $p < 0.01$ , indicating significant difference.

The three-dimensional structures of these NTases could be modeled, as for SVNTase and SANTase in this study, using the ECNTase crystal structure as a template (data not shown). Using the resulting model structures for the various *Shewanella* NTases, the numbers of potential salt bridges could be determined, it being revealed that

1  
2  
3  
4  
5  
6 these NTases could again be classified into two types (Table 2). The NTases derived  
7  
8 from 'halophilic' *Shewanella* species including SVNTase showed an average number of  
9  
10  $9.2 \pm 0.45$  and those from 'halotolerant' ones including SANTase one of  $15.4 \pm 0.89$ ,  $p <$   
11  
12  $0.01$ , indicating significant difference.  
13

14  
15 If we assume that NTases from 'halophilic' *Shewanella* are more stable as to  
16  
17 NaCl than ones from 'halotolerant' ones, as has been biochemically proved for the  
18  
19 representative SVNTase and SANTase in this study, the NaCl tolerance difference  
20  
21 between the two types of *Shewanella* NTases can be attributed to the differences in the  
22  
23 ratio of acidic to basic amino acid residues and the number of potential salt bridges.  
24  
25

### 26 27 **Environmental adaptation of *Shewanella* species**

28  
29  
30  
31

32 The present *Shewanella* NTases are peripheral proteins, which renders them constantly  
33  
34 exposed to the external NaCl environment. Therefore, their activities must be finely  
35  
36 tuned through changes in the ratio of acidic to basic residues and the number of salt  
37  
38 bridges, which are fundamental for cell growth. In sea water environments, where  
39  
40 'halophilic' *Shewanella* species live, normal salt concentrations are submolar and thus the  
41  
42 NTases would never encounter the molar salt concentrations examined in the present *in*  
43  
44 *vitro* assays. Nonetheless, from the present study, it can be at least concluded that  
45  
46 SVNTase is more stable as to NaCl than SANTase, which might reflect a sea water  
47  
48 adaptation mechanism. Not only the molecular mechanism for bacterial adaptation to  
49  
50 salt environments, but also the present findings regarding the molecular basis of salt  
51  
52 stability will facilitate further progress as to genetic improvement of salinity tolerance in  
53  
54 future agriculture.  
55  
56  
57  
58  
59  
60

1  
2  
3  
4  
5  
6 The present structure analysis of *Shewanella* NTases indicated that the  
7  
8 *Shewanella* species have evolved into two distinct groups, in accordance with the growth  
9  
10 conditions, i.e., NaCl concentration, for the source *Shewanella* species (Table 2). This  
11  
12 *Shewanella* grouping with regard to halophilicity is also applicable to the piezophilicity  
13  
14 of *Shewanella* growth: 'halophilic' and 'halotolerant' species are piezophilic and  
15  
16 piezo-sensitive during growth, respectively (Nogi et al. 1998; Kato and Nogi 2001).  
17  
18 Therefore, the NTases of these *Shewanella* species might also have had chance to evolve  
19  
20 in accordance with hydrostatic pressure. The effect of pressure on the activity of  
21  
22 *Shewanella* enzymes will be of interest for a future study. Not only individual effects on  
23  
24 the stability of *Shewanella* enzymes, but also their collective impacts attributed to both  
25  
26 salt and pressure will provide substantial clues as to protein stability, which may be  
27  
28 fundamental for understanding bacterial adaptation to harsh conditions.  
29  
30  
31  
32  
33

34 **Acknowledgements** We wish to thank Saori Ueshima, Maya Kimura, and Mako  
35  
36 Nagase for their initial contributions to this work. This work was performed under the  
37  
38 Cooperative Research Program of the "Network Joint Research Center for Materials and  
39  
40 Devices". This work was supported by a Grant-in-Aid for Scientific Research from the  
41  
42 Ministry of Education, Culture, Sports, Science and Technology of Japan [No. 26240045],  
43  
44 a grant from the Japan Society for the Promotion of Science [No. 25-1446], and The Salt  
45  
46 Science Research Foundation [No. 1655].  
47  
48  
49  
50

#### 51 **Conflict of interest**

52  
53 The authors declare that they have no conflict of interest.  
54  
55  
56  
57  
58  
59  
60

## References

- 1  
2  
3  
4  
5  
6  
7  
8 Bengis-Garber C, Kushner DJ (1981) Purification and properties of 5'-nucleotidase from  
9  
10 the membrane of *Vibrio costicola*, a moderately halophilic bacterium. J Bacteriol  
11  
12 146:24–32  
13
- 14 Biasini M, Bienert S, Waterhouse A, Arnold K, Studer G, Schmidt T, Kiefer F, Cassarino  
15  
16 TG, Bertoni M, Bordli L, Schwede T (2014) SWISS-MODEL: modelling protein  
17  
18 tertiary and quaternary structure using evolutionary information. Nucleic Acids Res  
19  
20 42:W252–W258  
21  
22
- 23 Brettar I, Christen R, Höfle MG (2002) *Shewanella denitrificans* sp. nov., a vigorously  
24  
25 denitrifying bacterium isolated from the oxic-anoxic interface of the Gotland Deep  
26  
27 in the central Baltic Sea. Int J Syst Evol Microbiol 52:2211–2217  
28
- 29 Covington ED, Gelbmann CB, Kotloski NJ, Gralnick JA (2010) An essential role for  
30  
31 UshA in processing of extracellular flavin electron shuttles by *Shewanella*  
32  
33 *oneidensis*. Mol Microbiol 78:519–532  
34  
35
- 36 DasSarma S, DasSarma P (2015) Halophiles and their enzyme: negativity put to good use.  
37  
38 Curr Opin Microbiol 25:120-126  
39
- 40 Falkowski PG, Fenchel T, Delong EF (2008) The microbial engines that drive Earth's  
41  
42 biogeochemical cycles. Science 320:1034–1039  
43  
44
- 45 Firon A, Dinis M, Raynal B, Poyart C, Trieu-Cuot P, Kaminski PA (2014) Extracellular  
46  
47 nucleotide catabolism by the Group B *Streptococcus* ectonucleotidase NudP  
48  
49 increases bacterial survival in blood. J Biol Chem 289:5479–5489  
50
- 51 Fiske CH, Subbarow Y (1925) The colorimetric determination of phosphorus. J Biol  
52  
53 Chem 66:375–400  
54  
55  
56  
57  
58  
59  
60

- 1  
2  
3  
4  
5  
6 Fukuchi S, Yoshimune K, Wakayama M, Moriguchi M, Nishikawa K (2003) Unique  
7 amino acid composition of proteins in halophilic bacteria. *J Mol Biol* 327:347–357  
8  
9  
10 Hau HH, Gralnick JA (2007) Ecology and biotechnology of the genus *Shewanella*. *Annu*  
11 *Rev Microbiol* 61:237–258  
12  
13  
14 Hirokawa T, Boon-Chieng S, Mitaku S (1998) SOSUI: classification and secondary  
15 structure prediction system for membrane proteins. *Bioinformatics* 14:378–379  
16  
17  
18 Huang J, Sun B, Zhang X (2010) *Shewanella xiamenensis* sp. nov., isolated from coastal  
19 sea sediment. *Int J Syst Evol Microbiol* 60:1585–1589  
20  
21  
22  
23 Itami H, Sakai Y, Shimamoto T, Hama H, Tsuda M, Tsuchiya T (1989) Purification and  
24 characterization of membrane-bound 5'-nucleotidase of *Vibrio parahaemolyticus*. *J*  
25 *Biochem* 105:785–789  
26  
27  
28  
29  
30 **Kabsch W, Sander C (1983) Dictionary of protein secondary structure: pattern**  
31 **recognition of hydrogen-bonded and geometrical features. *Biopolymers* 22:2577–**  
32 **2637**  
33  
34  
35  
36 Kato Y, Fujii S, Kuribayashi T, Masanari M, Sambongi Y (2015) Thermal stability of  
37 cytochrome *c'* from mesophilic *Shewanella amazonensis*. *Biosci Biotech Biochem*  
38 **79:1125–1129**  
39  
40  
41  
42 **Kato C, Nogi Y (2001) Correlation between phylogenetic structure and function:**  
43 **examples from deep-sea *Shewanella*. *FEMS Microbiol Ecol* 35:223-230**  
44  
45  
46  
47 Knöfel T, Sträter N (1999) X-ray structure of the *Escherichia coli* periplasmic  
48 5'-nucleotidase containing a dimetal catalytic site. *Nat Struct Biol* 6:448–453  
49  
50  
51 Knöfel T, Sträter N (2001) *E. coli* 5'-nucleotidase undergoes a hinge-bending domain  
52 rotation resembling a ball-and-socket motion. *J Mol Biol* 309:255–266  
53  
54  
55  
56  
57  
58  
59  
60

- 1  
2  
3  
4  
5  
6 Laemmli UK (1970) Cleavage of structural proteins during the assembly of the head of  
7  
8 bacteriophage T4. *Nature* 227:680–685  
9
- 10 Leonardo MR, Moser DP, Barbieri E, Brantner CA, MacGregor BJ, Paster BJ,  
11  
12 Stackebrandt E, Nealson KH (1999) *Shewanella pealeana* sp. nov., a member of the  
13  
14 microbial community associated with the accessory nidamental gland of the squid  
15  
16 *Loligo pealei*. *Int J Syst Bacteriol* 49:1341–1351  
17
- 18 Liu Y, Gao W, Wang Y, Wu L, Liu X, Yan T, Alm E, Arkin A, Thompson DK, Fields  
19  
20 MW, Zhou J (2005) Transcriptome analysis of *Shewanella oneidensis* MR-1 in  
21  
22 response to elevated salt conditions. *J Bacteriol* 187:2501–2507  
23  
24
- 25 Lowry OH, Rosebrough NJ, Farr AL, Randall RJ (1951) Protein measurement with the  
26  
27 Folin phenol reagent. *J Biol Chem* 193:265–275  
28
- 29 Masanari M, Fujii S, Kawahara K, Oki H, Tsujino H, Maruno T, Kobayashi Y, Ohkubo T,  
30  
31 Wakai S, Sambongi Y (2016) Comparative study on stabilization mechanism of  
32  
33 monomeric cytochrome *c*<sub>5</sub> from deep-sea piezophilic *Shewanella violacea*. *Biosci*  
34  
35 *Biotechnol Biochem* 80:2365–2370  
36  
37
- 38 Masanari M, Wakai S, Ishida M, Kato C, Sambongi Y (2014) Correlation between the  
39  
40 optimal growth pressures of four *Shewanella* species and the stabilities of their  
41  
42 cytochromes *c*<sub>5</sub>. *Extremophiles* 18:617–627  
43  
44
- 45 Masanari M, Wakai S, Tamegai H, Kurihara T, Kato C, Sambongi Y (2011) Thermal  
46  
47 stability of cytochrome *c*<sub>5</sub> of pressure-sensitive *Shewanella livingstonensis*. *Biosci*  
48  
49 *Biotechnol Biochem* 75:1859–1861  
50
- 51 Nogi Y, Kato C, Horikoshi K (1998) Taxonomic studies of deep-sea barophilic  
52  
53 *Shewanella* strains and description of *Shewanella violacea* sp. nov. *Arch Microbiol*  
54  
55 170:331–338  
56  
57  
58  
59  
60



- 1  
2  
3  
4  
5  
6 Ogawa K, Sonoyama T, Takeda T, Ichiki S, Nakamura S, Kobayashi Y, Uchiyama S,  
7  
8 Nakasone K, Takayama SJ, Mita H, Yamamoto Y, Sambongi Y (2007) Roles of a  
9  
10 short connecting disulfide bond in the stability and function of psychrophilic  
11  
12 *Shewanella violacea* cytochrome *c*<sub>5</sub>. *Extremophiles* 11:797–807  
13
- 14 Paul S, Bag SK, Das S, Harvill ET, Dutta C (2008) Molecular signature of hypersaline  
15  
16 adaptation: Insights from genome and proteome composition of halophilic  
17  
18 prokaryotes. *Genome Biol* 9:R70  
19
- 20  
21 Pettengill M, Robson S, Tresenriter M, Millán JL, Usheva A, Bingham T, Belderbos M,  
22  
23 Bergelson I, Burl S, Kampmann B, Gelinás L, Kollmann T, Bont L, Levy O (2013)  
24  
25 Soluble ecto-5'-nucleotidase (5'-NT), alkaline phosphatase, and adenosine  
26  
27 deaminase (ADA1) activities in neonatal blood favor elevated extracellular  
28  
29 adenosine. *J Biol Chem* 288:27315–27326  
30
- 31  
32 Pinchuk GE, Ammons C, Culley DE, Li SM, McLean JS, Romine MF, Neilson KH,  
33  
34 Fredrickson JK, Beliaev AS (2008) Utilization of DNA as a sole source of  
35  
36 phosphorus, carbon, and energy by *Shewanella* spp.: Ecological and physiological  
37  
38 implications for dissimilatory metal reduction. *Appl Environ Microbiol* 74:1198–  
39  
40 1208  
41
- 42  
43 Rhodes ME, Fitz-Gibbon ST, Oren A, House CH (2010) Amino acid signatures of  
44  
45 salinity on an environmental scale with a focus on the Dead Sea. *Environ Microbiol*  
46  
47 12:2613–2623  
48
- 49 Sakai Y, Tamao Y, Shimamoto T, Hama H, Tsuda M, Tsuchiya T (1989) Cloning and  
50  
51 expression of the 5'-nucleotidase gene of *Vibrio parahaemolyticus* in *Escherichia*  
52  
53 *coli* and overproduction of the enzyme. *J Biochem* 105:841–846  
54
- 55  
56 Takenaka S, Wakai S, Tamegai H, Uchiyama S, Sambongi Y (2010) Comparative analysis  
57  
58  
59  
60

- 1  
2  
3  
4  
5 of highly homologous *Shewanella* cytochromes  $c_5$  for stability and function. *Biosci*  
6  
7  
8 *Biotechnol Biochem* 74:1079–1083
- 9  
10 Tamao Y, Noguchi K, Sakai-Tomita Y, Hama H, Shimamoto T, Kanazawa H, Tsuda M,  
11  
12 Tsuchiya T (1991) Sequence analysis of *nutA* gene encoding membrane-bound  $\text{Cl}^-$   
13  
14 -dependent 5'-nucleotidase of *Vibrio parahaemolyticus*. *J Biochem* 109:24–29
- 15  
16 Venkateswaran K, Dollhopf ME, Aller R, Stackebrandt E, Nealson KH (1998)  
17  
18 *Shewanella amazonensis* sp. nov., a novel metal-reducing facultative anaerobe from  
19  
20 Amazonian shelf muds. *Int J Syst Bacteriol* 48:965–972
- 21  
22 Venkateswaran K, Moser DP, Dollhopf ME, Lies DP, Saffarini DA, MacGregor BJ,  
23  
24 Ringelberg DB, White DC, Nishijima M, Sano H, Burghardt J, Stackebrandt E,  
25  
26 Nealson KH (1999) Polyphasic taxonomy of the genus *Shewanella* and description  
27  
28 of *Shewanella oneidensis* sp. nov. *Int J Syst Bacteriol* 49:705–724
- 29  
30  
31  
32 Weiner RM, Coyne VE, Brayton P, West P, Raiken SF (1988) *Alteromonas colwelliana*  
33  
34 sp. nov., an isolate from oyster habitats. *Int J Syst Bacteriol* 38:240–244
- 35  
36 Weyer KA, Schäfer W, Lottspeich F, Michel H (1987) The cytochrome subunit of the  
37  
38 photosynthetic reaction center from *Rhodospseudomonas viridis* is a lipoprotein.  
39  
40 *Biochemistry* 26:2909-2914
- 41  
42  
43 Xiao X, Wang P, Zeng X, Bartlett DH, Wang F (2007) *Shewanella psychrophila* sp. nov.  
44  
45 and *Shewanella piezotolerans* sp. nov., isolated from west Pacific deep-sea  
46  
47 sediment. *Int J Syst Evol Microbiol* 57:60–65
- 48  
49 Yegutkin GG, Samburski SS, Jalkanen S, Novak I (2006) ATP-consuming and  
50  
51 ATP-generating enzymes secreted by pancreas. *J Biol Chem* 281:29441–29447
- 52  
53 Zagursky RJ, Ooi P, Jones KF, Fiske MJ, Smith RP, Green BA (2000) Identification of a  
54  
55 *Haemophilus influenzae* 5'-nucleotidase protein: cloning of the *nucA* gene and  
56  
57  
58  
59  
60

1  
2  
3  
4  
5 immunogenicity and characterization of the NucA protein. Infect Immun 68:2525–  
6 2534  
7

8  
9  
10 Zhao JS, Manno D, Beaulieu C, Paquet L, Hawari J (2005) *Shewanella sediminis* sp. nov.,  
11 a novel Na<sup>+</sup>-requiring and hexahydro-1,3,5-trinitro-1,3,5-triazine-degrading  
12 bacterium from marine sediment. Int J Syst Evol Microbiol 55:1511–1520  
13  
14  
15  
16  
17  
18  
19  
20  
21  
22  
23  
24  
25  
26  
27  
28  
29  
30  
31  
32  
33  
34  
35  
36  
37  
38  
39  
40  
41  
42  
43  
44  
45  
46  
47  
48  
49  
50  
51  
52  
53  
54  
55  
56  
57  
58  
59  
60

For Peer Review

## Figure legends

**Fig. 1.** Purification and molecular masses. SDS-PAGE analysis for purification steps for SVNTase (**a**) and SANTase (**b**). Lanes 1, total membrane protein fractions; lanes 2, fractions solubilized with C<sub>12</sub>E<sub>8</sub>; lanes 3, first HiTrap Q elution; lanes 4, second HiTrap Q elution; and lanes 5, Superdex 200 elution. Three to ten micrograms of protein was loaded per lane, and the gels were stained with Coomassie Brilliant Blue G-250. *Arrows* indicate the positions of NTases. Molecular mass markers are also indicated in kDa. Mass spectroscopy of the purified enzyme preparations of SVNTase (**c**) and SANTase (**d**). The materials used for SDS-PAGE analysis (lanes 5 in Fig. 1ab) were subjected to mass spectroscopy. *Arrows* indicate the peaks of NTases. Impurities corresponding to the two bands observed on SDS-PAGE of SVNTase (lane 5 in Fig. 1a) were also detected in this analysis (molecular masses lower than that of SVNTase, Fig. 1c).

**Fig. 2.** Sequence comparison of NTases from *S. violacea*, *S. amazonensis*, and *E. coli*. The amino acid sequences were obtained from a database: SVNTase, WP\_041419915.1; SANTase, WP\_037417707.1; and ECNTase, NP\_415013. The deduced sequences of signal peptides and mature proteins are depicted in lower and upper case letters, respectively. Gaps in the alignment are indicated by dashes. The residue numbers of ECNTase including its signal peptide are indicated above the sequence. The secondary structure elements assigned using the substrate-bound ECNTase crystal structure (PDB ID: 1HPU) with the program *DSSP* (Kabsch and Sander 1983) are schematically shown under the sequences,  $\alpha$ -helices being represented by *ribbons* and  $\beta$  strands by *arrows*.

1  
2  
3  
4  
5  
6 Conserved residues mentioned in the text and others in the mature regions are highlighted  
7  
8 by black and gray shadowing, respectively.  
9  
10

11  
12  
13  
14 **Fig. 3.** Similarity of purified enzyme activities. (a) Effects of pH on the ATP hydrolysis  
15 activities of SVNTase (filled symbols) and SANTase (open symbols). The buffers used  
16 were 20 mM morpholinepropanesulfonic acid-NaOH (pH 5.0–7.0, triangles), 20 mM  
17 Tris-HCl (pH 7.0–9.0, circles), and 20 mM glycine-NaOH (pH 9.0–11.0, squares). The  
18 activity relative to the maximal levels of the respective enzymes is shown. (b) Effects  
19 of divalent cations on the ATP hydrolysis activities of SVNTase (filled bars) and  
20 SANTase (open bars). The activity relative to that of the respective enzymes with 10  
21 mM MgCl<sub>2</sub> is shown. (c) Substrate specificity of the ATP hydrolysis activities of  
22 SVNTase (filled bars) and SANTase (open bars). The activity relative to that of the  
23 respective enzymes for ATP is shown. The symbols and bar heights represent the mean  
24 values obtained for four measurements in each panel. Error bars represent the standard  
25 deviations.  
26  
27  
28  
29  
30  
31  
32  
33  
34  
35  
36  
37  
38  
39  
40  
41  
42  
43  
44

45 **Fig. 4.** Difference in the purified enzyme activities. (a) Effects of temperature on the  
46 ATP hydrolysis activities of purified SVNTase (filled circles) and SANTase (open circles).  
47 The activity values are plotted as a function of the activity assay temperature, where the  
48 pH perturbation due to the temperature difference appeared to be at most 0.1 pH units  
49 under the buffer conditions used. The activity relative to the maximal levels of the  
50 respective enzymes is shown. The symbols represent the mean values obtained for four  
51  
52  
53  
54  
55  
56  
57  
58  
59  
60

1  
2  
3  
4  
5  
6 measurements. Error bars represent the standard deviations. **(b)** Effects of NaCl  
7  
8 concentration on the ATP hydrolysis activities of SVNTase (filled circles) and SANTase  
9  
10 (open circles). The activity relative to that of the respective enzymes with 0 M NaCl is  
11  
12 shown. The symbols represent the mean values obtained for four measurements **using**  
13  
14 **two different enzyme preparations.** Error bars represent the standard deviations.  
15  
16  
17  
18  
19  
20

21 **Fig. 5.** Distribution of potential salt bridges in model structures of SVNTase (a, magenta)  
22  
23 and SANTase **(b,** cyan). The side chains of acidic (red) and basic (blue) amino acid  
24  
25 residues that possibly form salt bridges (green dots) are indicated.  
26  
27  
28  
29  
30  
31  
32  
33  
34  
35  
36  
37  
38  
39  
40  
41  
42  
43  
44  
45  
46  
47  
48  
49  
50  
51  
52  
53  
54  
55  
56  
57  
58  
59  
60

**Table 1.** Purification steps for SVNTase and SANTase.

|  | Total protein<br>(mg) |      | Total activity<br>(U) |      | Recovery<br>(%) |      | Specific<br>activity<br>(U mg <sup>-1</sup> ) |      | Purification<br>(fold) |      |
|--|-----------------------|------|-----------------------|------|-----------------|------|---|------|------------------------|------|
|  | SV                    | SA   | SV                    | SA   | SV              | SA   | SV  | SA   | SV                     | SA   |
| Membrane                               | 400                   | 403  | 552                   | 1530 | 100             | 100  | 1.4   | 3.8  | 1.0                    | 1.0  |
| C <sub>12</sub> E <sub>8</sub> extract | 109                   | 109  | 309                   | 837  | 56.0            | 54.7 | 2.8   | 7.7  | 2.0                    | 2.0  |
| First<br>Hi Trap Q                     | 14.0                  | 22.1 | 355                   | 500  | 64.3            | 32.7 | 25.4  | 22.6 | 18.1                   | 5.9  |
| Second<br>Hi Trap Q                    | 8.2                   | 5.5  | 213                   | 173  | 38.6            | 11.3 | 26.0  | 31.5 | 18.6                   | 8.3  |
| Gel filtration                         | 0.3                   | 0.3  | 19.5                  | 52.5 | 3.5             | 3.4  | 65.0  | 175  | 46.4                   | 46.1 |

Materials from *S. violacea* and *S. amazonensis* cells are designated as SV and SA, respectively.

**Table 2.** *Shewanella* NTases.

| <i>Shewanella</i> species<br>(Accession number<br>of NTase) | Halophilicity            |   | Reference                               | Definition<br>according to<br>Venkateswaran<br><i>et al.</i> , 1999 | Total<br>amino<br>acid<br>residues<br>of<br>mature<br>NTase | Sequence<br>identity<br>with<br>SVNTase<br>(%) | Ratio of<br>amino<br>acid<br>residues<br>(acidic /<br>basic) | Number<br>of<br>potential<br>salt<br>bridges |
|---|--------------------------|---|---|---|---|--|--|--|
|   | Growth<br>on 0 M<br>NaCl | NaCl<br>required<br>for<br>optimal<br>growth<br>(M) |   |   |   |  |  |  |
| SVNTase type  |                          |   |   |   |   |  |  |  |
| <i>S. violacea</i><br>(WP_041419915.1)                      | –                        | 0.51  | Nogi <i>et al.</i><br>1998              | Halophilic  | 549   | 100  | 1.84   | 9  |
| <i>S. pealeana</i><br>(WP_012155150.1)                      | –                        | 0.5   | Leonardo<br><i>et al.</i> 1999          | Halophilic  | 552   | 85.3   | 1.73   | 9  |
| <i>S. piezotolerans</i><br>(ACJ29571.1)                     | –                        | 0.51–<br>0.68                                       | Xiao <i>et al.</i><br>2007              | Halophilic  | 550   | 87.1   | 1.74   | 9  |
| <i>S. sediminis</i><br>(WP_012143007.1)                     | –                        | 0.34  | Zhao <i>et al.</i><br>2005              | Halophilic  | 549   | 89.3   | 1.93   | 9  |
| <i>S. colwelliana</i><br>(WP_028764957.1)                   | –                        | 0.34–<br>0.68                                       | Weiner <i>et</i><br><i>al.</i> 1988     | Halophilic  | 546   | 84.9   | 1.68   | 10   |
| SANTase type  |                          |   |   |   |   |  |  |  |
| <i>S. amazonensis</i><br>(WP_011760134.1)                   | +                        | 0.17  | Venkatesw<br>aran <i>et al.</i><br>1998 | Halotolerant  | 551   | 69.7   | 1.49   | 14   |
| <i>S. oneidensis</i><br>(NP_717608.1)                       | +                        | 0.1–<br>0.3   | Liu <i>et al.</i><br>2005               | Partially<br>halotolerant   | 549   | 64.3   | 1.16   | 16   |
| <i>S. denitrificans</i><br>(WP_011496574.1)                 | +                        | 0.17–<br>0.51                                       | Brettar <i>et</i><br><i>al.</i> 2002    | Partially<br>halotolerant   | 551   | 69.6   | 1.21   | 16   |
| <i>S. xiamenensis</i><br>(WP_037417707.1)                   | +                        | 0.17–<br>0.34                                       | Huang <i>et</i><br><i>al.</i> 2010      | Partially<br>halotolerant   | 549   | 64.9   | 1.18   | 16   |
| <i>S. putrefaciens</i><br>(WP_014610752.1)                  | +                        | ~0.2  | Venkatesw<br>aran <i>et al.</i><br>1999 | Halotolerant  | 552   | 66.0   | 1.22   | 15   |



Extremophiles

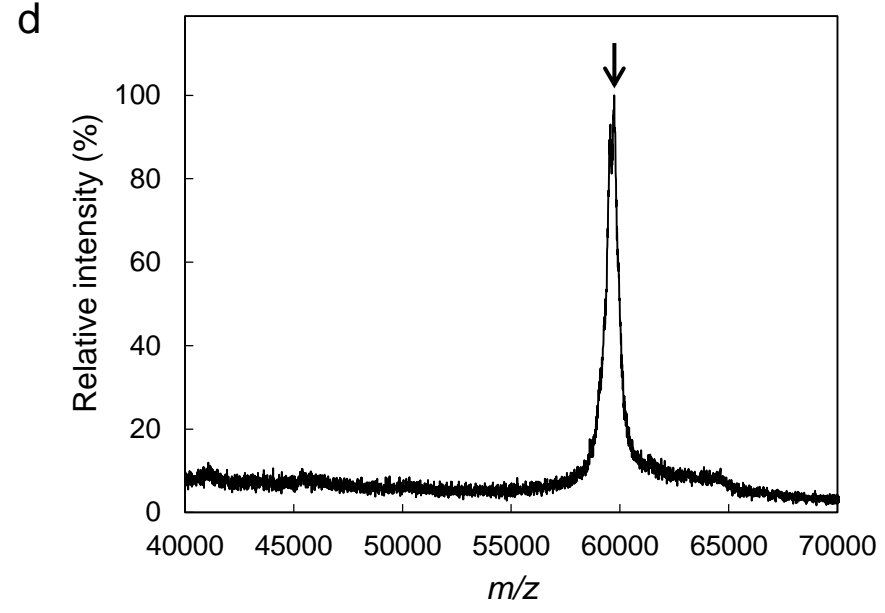
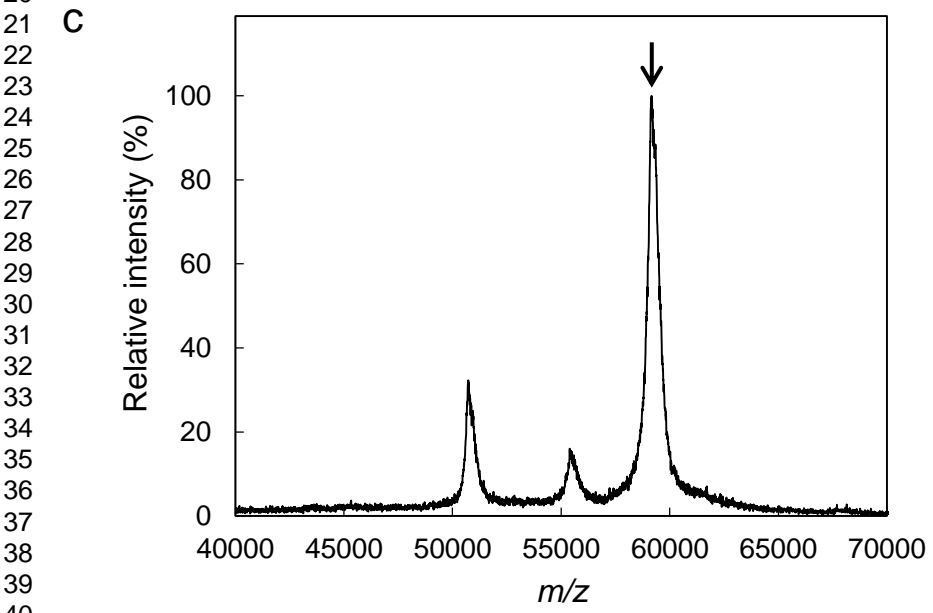
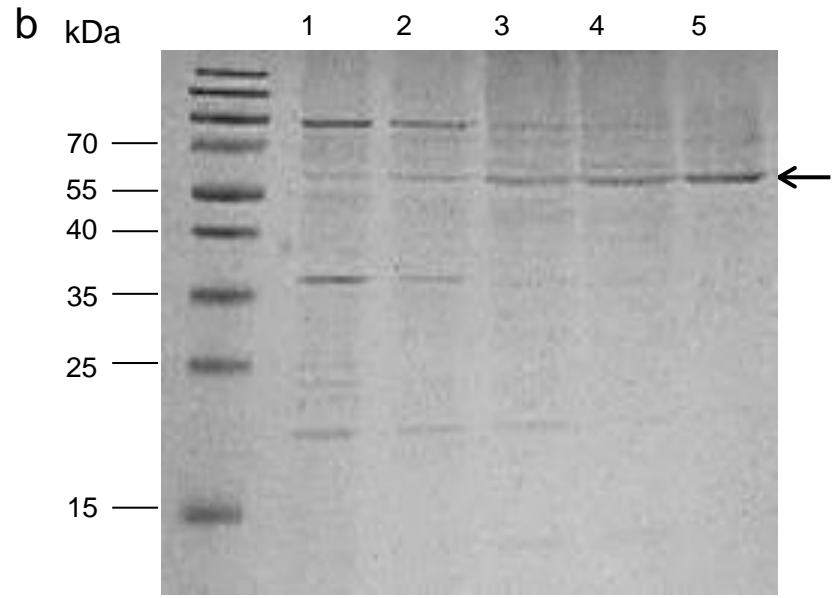
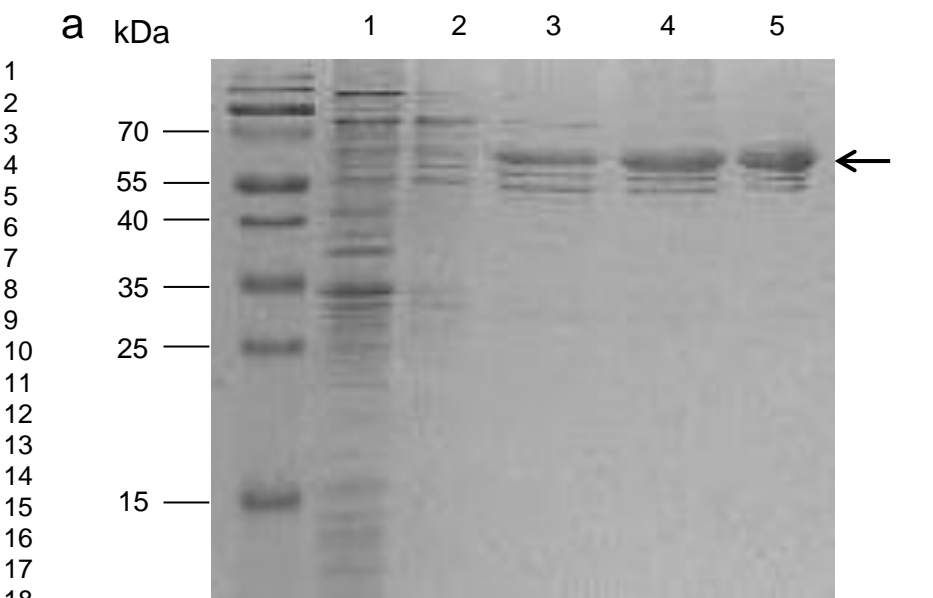


Fig. 1. Kuribayashi *et al.*

Extremophiles

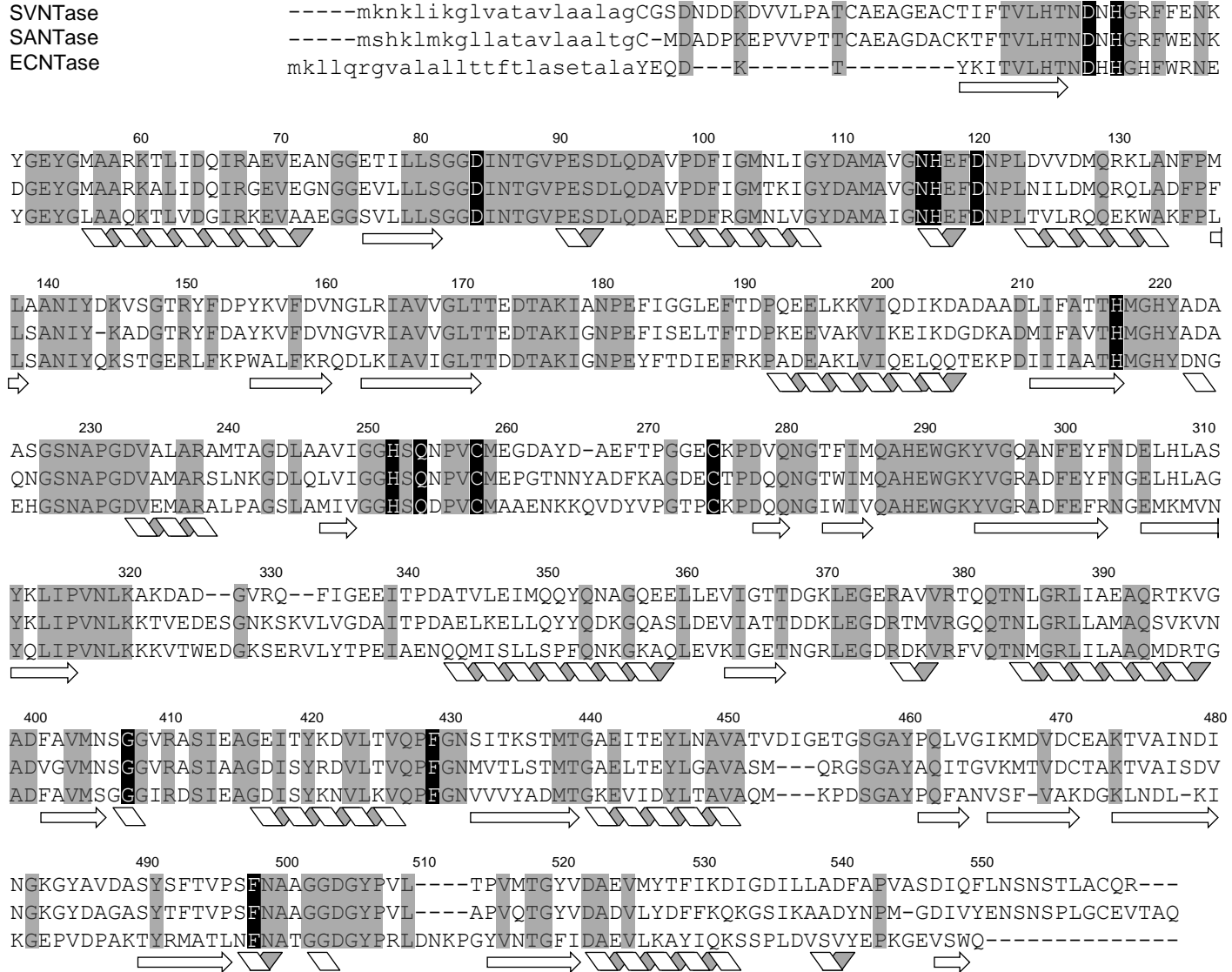


Fig. 2. Kuribayashi et al.

Extremophiles

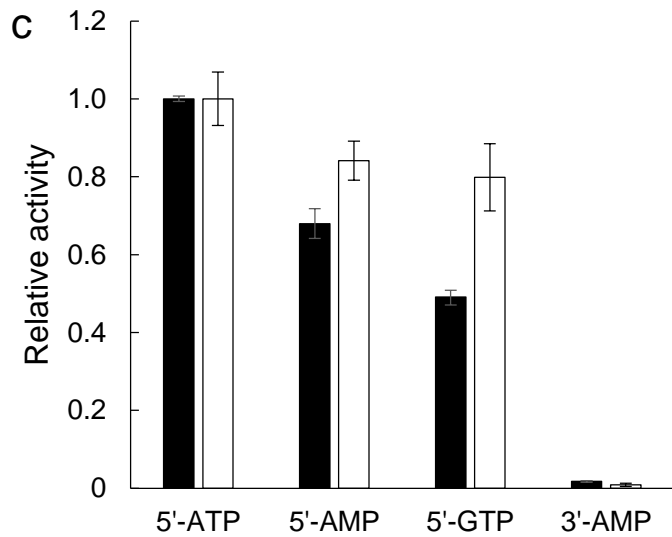
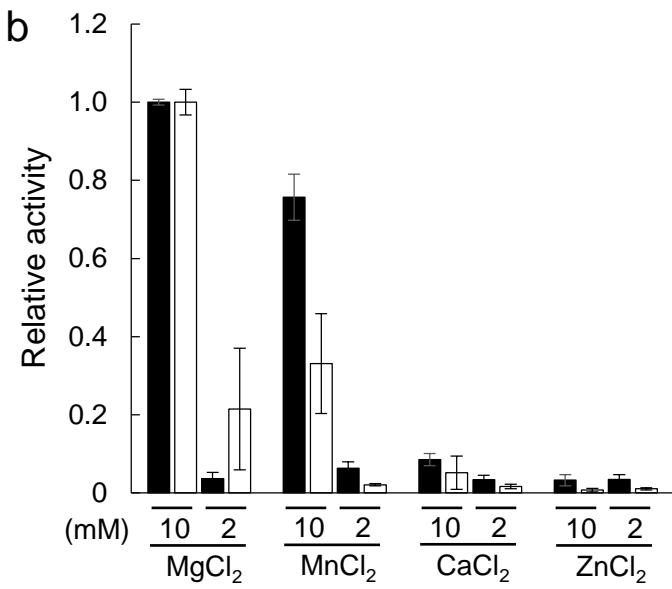
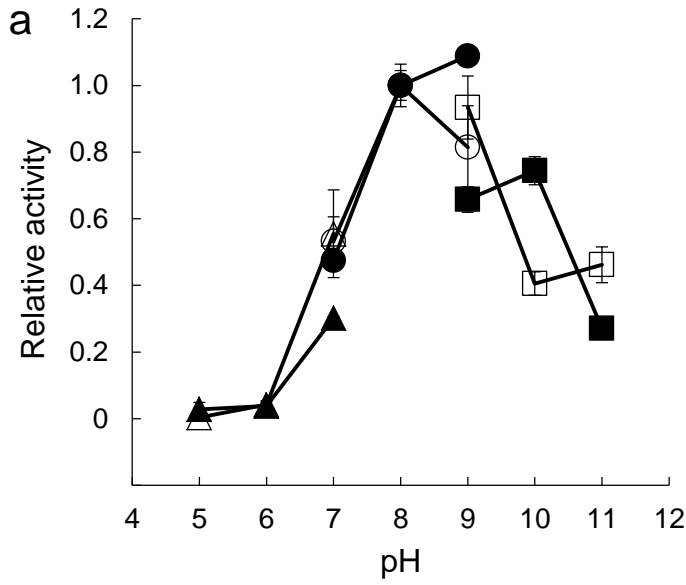
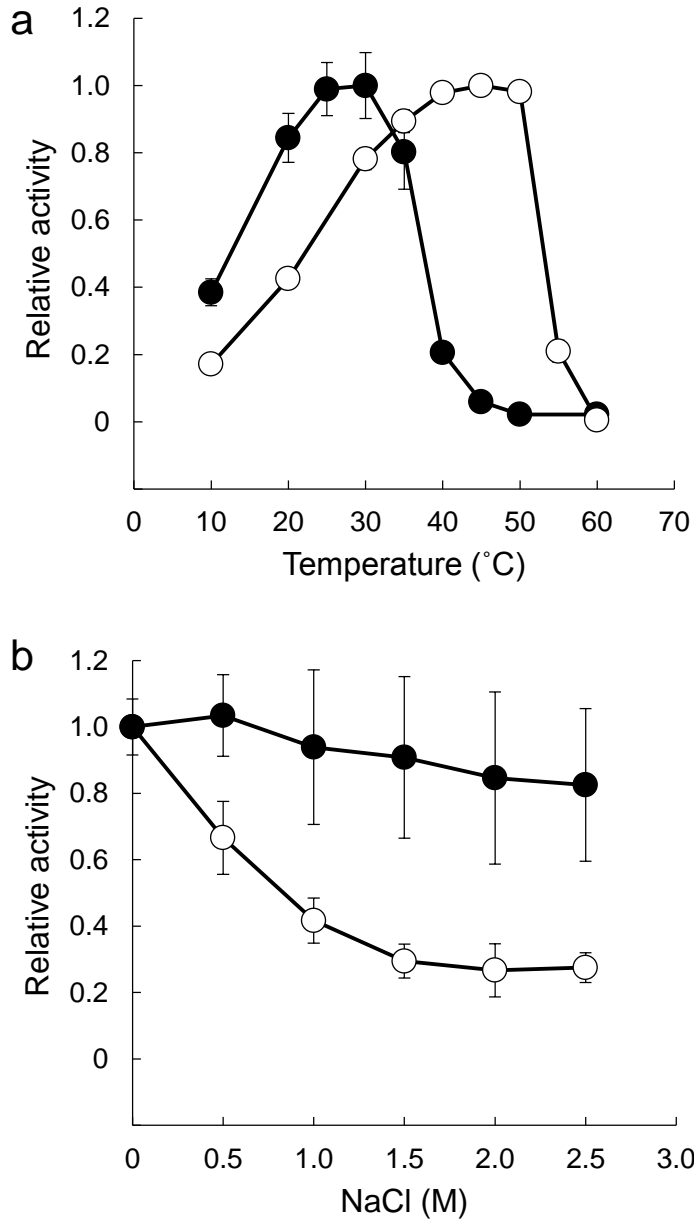
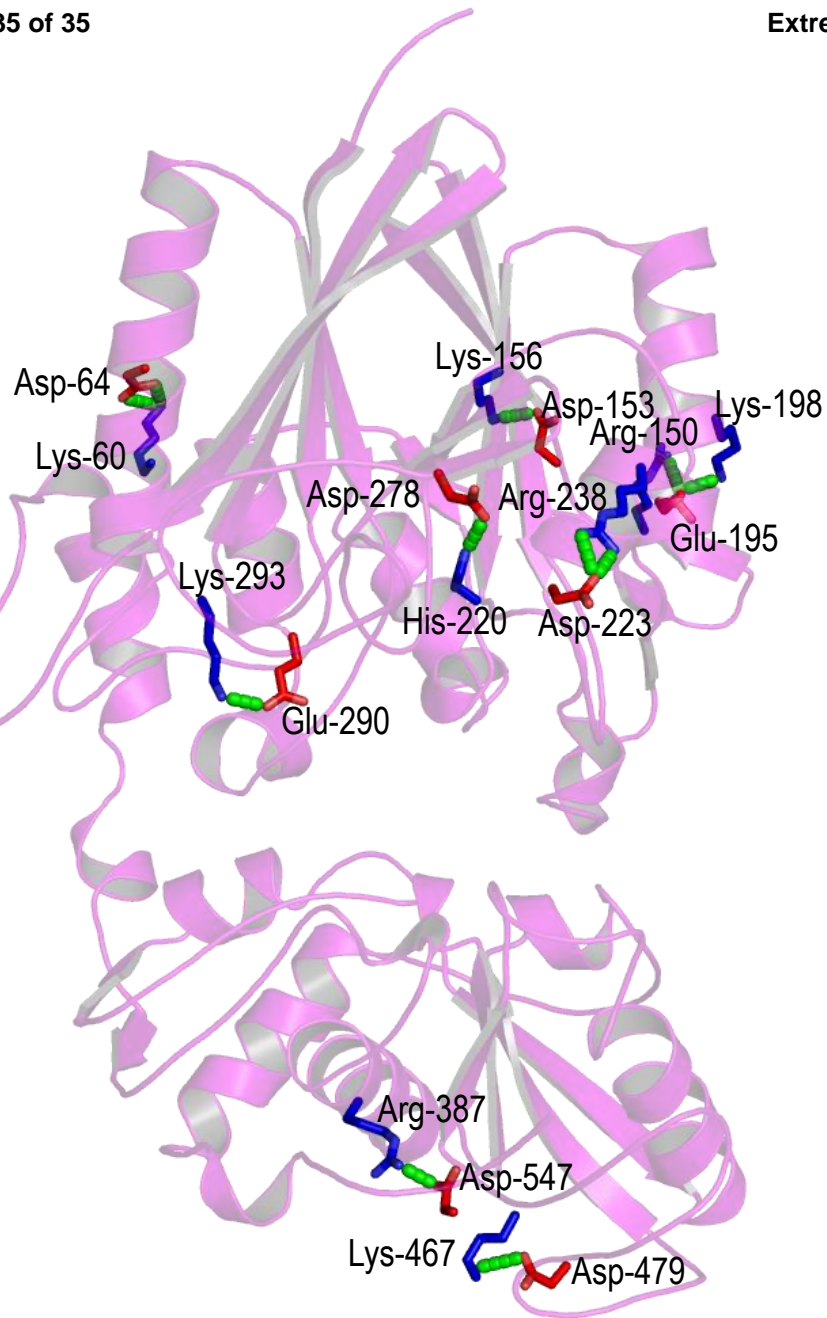


Fig. 3. Kuribayashi *et al.*

1  
2  
3  
4  
5  
6  
7  
8  
9  
10  
11  
12  
13  
14  
15  
16  
17  
18  
19  
20  
21  
22  
23  
24  
25  
26  
27  
28  
29  
30  
31  
32  
33  
34  
35  
36  
37  
38  
39  
40  
41  
42  
43  
44  
45  
46  
47  
48  
49  
50  
51  
52  
53  
54  
55  
56  
57  
58

Fig. 4. Kuribayashi *et al.*

a



Extremophiles

b

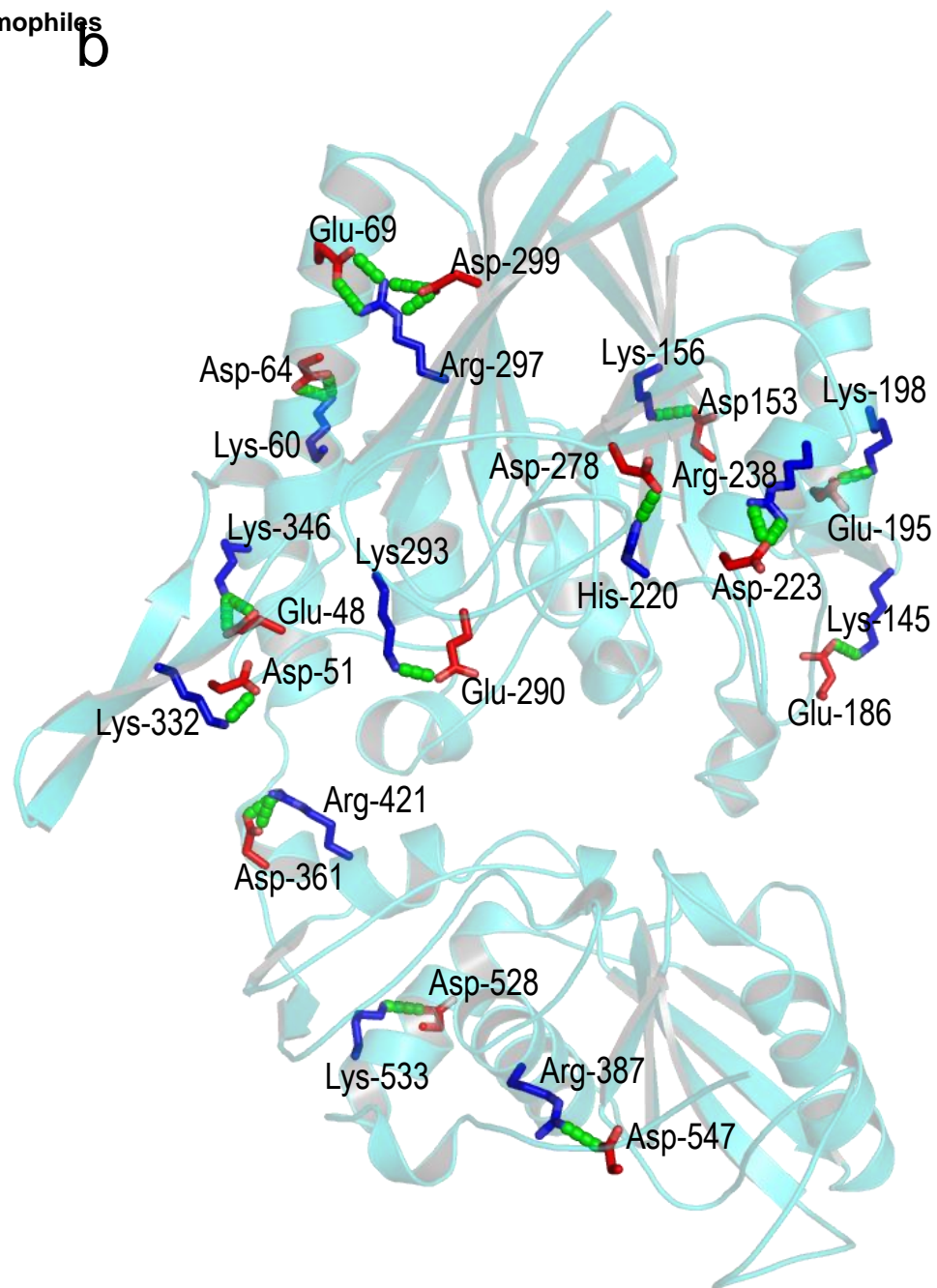


Fig. 5. Kuribayashi et al.