

Fate of ^{14}C -Labeled Microbial Products Derived from Nitrifying Bacteria in Autotrophic Nitrifying Biofilms

Satoshi Okabe,^{1*} Tomonori Kindaichi,² and Tsukasa Ito¹

Department of Urban and Environmental Engineering, Graduate School of Engineering, Hokkaido University, Sapporo 060-8628, Japan,¹ and Department of Social and Environmental Engineering, Graduate School of Engineering, Hiroshima University, 1-4-1 Kagamiyama, Higashihiroshima 739-8527, Japan²

Received 18 November 2004/Accepted 26 January 2005

The cross-feeding of microbial products derived from ^{14}C -labeled nitrifying bacteria to heterotrophic bacteria coexisting in an autotrophic nitrifying biofilm was quantitatively analyzed by using microautoradiography combined with fluorescence in situ hybridization (MAR-FISH). After only nitrifying bacteria were labeled with [^{14}C]bicarbonate, biofilm samples were incubated with and without NH_4^+ as a sole energy source for 10 days. The transfer of ^{14}C originally incorporated into nitrifying bacterial cells to heterotrophic bacteria was monitored with time by using MAR-FISH. The MAR-FISH analysis revealed that most phylogenetic groups of heterotrophic bacteria except the β -*Proteobacteria* showed significant uptake of ^{14}C -labeled microbial products. In particular, the members of the *Chloroflexi* were strongly MAR positive in the culture without NH_4^+ addition, in which nitrifying bacteria tended to decay. This indicated that the members of the *Chloroflexi* preferentially utilized microbial products derived from mainly biomass decay. On the other hand, the members of the *Cytophaga-Flavobacterium* cluster gradually utilized ^{14}C -labeled products in the culture with NH_4^+ addition in which nitrifying bacteria grew. This result suggested that these bacteria preferentially utilized substrate utilization-associated products of nitrifying bacteria and/or secondary metabolites of ^{14}C -labeled structural cell components. Our results clearly demonstrated that the coexisting heterotrophic bacteria efficiently degraded and utilized dead biomass and metabolites of nitrifying bacteria, which consequently prevented accumulation of organic waste products in the biofilm.

Most bacteria in the natural environment and engineering systems are present in the form of complex multispecies biofilms attached to solid surfaces rather than as planktonic (free-swimming) isolated cells in the bulk water phase (10, 27, 37, 38, 41). Microbial life in such biofilms, which cannot be seen in a planktonic state, is mostly characterized by multiplicity (many species together), nutrient limitation, competition for oxygen, substrates, and/or space (beneficial or inhibitory interactions among microbial species), and a structured distribution of the microbial species. Therefore, several studies have been performed on wastewater treatment biofilms by combining fluorescence in situ hybridization (FISH) and microsensor technology to link the spatial organization of microbial communities and in situ functions at the community level (10, 26, 27, 38).

The coexistence of a high level of heterotrophic bacteria with nitrifying bacteria has often been found in autotrophic nitrifying biofilms cultured without an external organic carbon supply by applying a 16S rRNA approach (16, 27, 28). It has been hypothesized that heterotrophic bacteria scavenge organic matter derived from biomass decay and substrate metabolism of nitrifying bacteria. However, the in situ ecophysiology of heterotrophic bacteria in such autotrophic biofilms is still largely unknown because most of the heterotrophic bacteria are uncultured microorganisms and the use of only the 16S

rRNA approach does not allow a direct link between identity and the in situ catabolic activity in the biofilm.

A combination of microautoradiography (MAR) and the FISH approach has recently been used to study the in situ ecophysiology of various cultivable or uncultivable bacteria in activated sludge (8, 23, 24, 25), marine samples (6, 30, 31, 33), freshwater sediments (11, 12), sewer biofilms (14), and autotrophic nitrifying biofilms (16). These studies have demonstrated that the MAR-FISH technique has significant potential for providing a direct link between rRNA-based phylogenetic identification and in situ substrate uptake patterns (metabolic capability) without a requirement for cultivation.

We previously analyzed the phylogenetic identities, spatial organization, and substrate uptake patterns of coexisting heterotrophic bacteria in autotrophic nitrifying biofilms by using MAR-FISH with externally supplied ^{14}C -labeled synthetic organic substrates, including acetate, amino acids, and *N*-acetyl-D-glucosamine (NAG) (16). However, the radiolabeled substrates added were foreign to the microbial community and might not represent the actual food sources of heterotrophic bacteria in the biofilm. It is, therefore, too early to form a clear picture of the in situ ecophysiological interactions between nitrifying bacteria and heterotrophic bacteria in a biofilm.

The objective of the present study was to determine which phylogenetic groups of heterotrophic bacteria could directly utilize microbial products (e.g., structural cell components and metabolites) derived from nitrifying bacteria in an autotrophic nitrifying biofilm. To achieve this objective, biofilm samples were first incubated with [^{14}C]bicarbonate to radiolabel only nitrifying bacteria, and after this the fate (transfer) of the radiolabeled ^{14}C atoms incorporated into nitrifying bacteria

* Corresponding author. Mailing address: Department of Urban and Environmental Engineering, Graduate School of Engineering, Hokkaido University, Kita 13, Nishi 8, Kita-ku, Sapporo 060-8628, Japan. Phone: 81-(0)11-706-6266. Fax: 81-(0)11-706-6266. E-mail: sokabe@eng.hokudai.ac.jp.

TABLE 1. 16S and 23S rRNA-targeted oligonucleotide probes and hybridization conditions

Probe	Sequence (5' to 3')	FA (%) ^a	Specificity	Reference
EUB338	GCTGCCTCCCGTAGGAGT	— ^b	Most Bacteria	1
EUB338 II	GCAGCCACCCGTAGGTGT	— ^b	<i>Planctomycetales</i>	7
EUB338 III	GCTGCCACCCGTAGGTGT	— ^b	<i>Verrucomicrobiales</i>	7
ALF968	GGTAAGGTTCTGCGCGTT	20	α - <i>Proteobacteria</i> , except <i>Rickettsiales</i>	22
BET42a ^c	GCCTTCCCACTTCGTTT	35	β - <i>Proteobacteria</i>	19
GAM42a ^d	GCCTTCCACATCGTTT	35	γ - <i>Proteobacteria</i>	19
GNSB-941	AAACCACACGCTCCGCT	35	Phylum <i>Chloroflexi</i>	9
CFX1223	CCATTGTAGCGTGTGTGTMG	35	Phylum <i>Chloroflexi</i>	4
CF319a/b	TGGTCCGTRTCTCAGTAC	35	CF cluster of the <i>Bacteroidetes</i>	20
Nso190	CGATCCCCTGCTTTTCTCC	35 ^e	Ammonia oxidizers	21
Ntspa662	GGAATTCCGCGCTCCTCT	35	Genus <i>Nitrospira</i>	8
Comp Ntspa662 ^f	GGAATTCCGCTCCTCTCT		Competitor for Ntspa662	8
NIT3	CCTGTGCTCCATGCTCCG	40	<i>Nitrobacter</i> spp.	43
Comp NIT3 ^g	CCTGTGCTCCAGGCTCCG		Competitor for NIT3	43

^a FA, formamide concentration in the hybridization buffer.

^b The probe can be used at any formamide concentration.

^c Unlabeled probe GAM42a was used as a competitor to enhance specificity.

^d Unlabeled probe BET42a was used as a competitor to enhance specificity.

^e Although the original description of the use of Nso190 indicated that 55% formamide should be used, we experimentally confirmed that 35% formamide was sufficient to discriminate ammonia-oxidizing β -*Proteobacteria* in our autotrophic nitrifying biofilm, which is consistent with other descriptions of the use of Nso190 at much lower stringencies than those originally described (32).

^f Unlabeled probe Ntspa662 was used as a competitor to enhance specificity.

^g Unlabeled probe NIT3 was used as a competitor to enhance specificity.

was traced and visualized by using the MAR-FISH approach. In situ ecophysiological interactions between nitrifying bacteria and heterotrophic bacteria in the biofilm were examined at different phylogenetic group levels.

MATERIALS AND METHODS

Biofilm samples. Autotrophic nitrifying biofilms were cultured with synthetic medium in a partially submerged rotating disk reactor (RDR) consisting of five polymethyl methacrylate disks with four removable slides. The autotrophic nitrifying biofilms were seeded with primary settling tank effluent from the So-seigawa municipal wastewater treatment plant (Sapporo, Japan) and then cultured with synthetic nutrient medium that contained no organic substrate, which led to development of a simple model biofilm ecosystem. The synthetic nutrient medium was composed of 3.6 mM NH₄Cl, 17.8 mM NaHCO₃, 0.4 mM K₂HPO₄, 0.41 mM MgSO₄ · 7H₂O, and 1.25 mM NaCl, and the pH was 7.8 ± 0.2. Distilled water, which contained no detectable dissolved organic carbon, was used to dilute the medium. The RDR was operated as previously described by Kindaichi et al. (16), and biofilm samples were obtained from the RDR after about 2 months.

Incubation with [¹⁴C]bicarbonate. This study consisted of the following two experiments: a ¹⁴C-labeling experiment and a ¹⁴C-tracing experiment. First, the ¹⁴C-labeling experiment was performed to produce ¹⁴C-labeled nitrifying bacterial cells. The biofilms were taken from the removable slides (surface area, 18 cm²) and homogenized. The homogenized biofilms were diluted with the synthetic nutrient medium containing 3.6 mM NH₄⁺ to obtain a final concentration of volatile suspended solids of 1.2 g per liter. Five-milliliter portions of the diluted samples were transferred into 12-ml glass serum vials. The bottles were sealed with gas-tight rubber stoppers. Sodium [¹⁴C]bicarbonate (specific activity, 58 mCi mmol⁻¹; Amersham Bioscience, Little Chalfont, United Kingdom), a carbon source for nitrifying bacteria, was injected into the vials to obtain a final radioactivity of 10 μ Ci mmol⁻¹ and a [¹⁴C]bicarbonate concentration of 35 μ M. Then the vials were incubated with shaking at 60 rpm for 6 h. Biofilm samples pasteurized at 70°C for 15 min were prepared and incubated with [¹⁴C]bicarbonate in the same way as a control to test for possible adsorption phenomena and chemography. After 6 h of incubation, the biomass was harvested by centrifugation (10,000 × g for 8 min) and washed twice with phosphate-buffered saline (PBS) (10 mM sodium phosphate buffer and 130 mM sodium chloride; pH 7.2) to remove excess unincorporated [¹⁴C]bicarbonate. At this stage, subsamples were taken, and MAR-FISH was conducted as described below to confirm that only nitrifying bacteria were labeled with ¹⁴C in mixed populations. We confirmed that only nitrifying bacteria were strongly MAR positive and that other heterotrophic bacteria were not MAR positive, suggesting that 6 h of incubation

was optimum for radiolabeling only nitrifying bacteria without ¹⁴C cross-feeding to heterotrophic bacteria.

Second, to investigate which phylogenetic groups of heterotrophic bacteria can utilize microbial products derived from nitrifying bacteria, the washed biomass samples (including ¹⁴C-labeled nitrifying bacteria) that were prepared in the ¹⁴C-labeling experiment were further incubated in fresh synthetic medium with unlabeled bicarbonate (0.5 mM) and with and without 3.6 mM NH₄⁺ as an energy source for 10 days. Since the NH₄⁺ was depleted during the 10-day incubation, additional NH₄⁺ (7.1 mM and 12.8 mM on day 1 and day 3, respectively) was added. All incubations with and without NH₄⁺ were conducted in duplicate, and the means and standard errors were determined.

Sample fixation. During the 10 days of incubation, subsamples were taken at 1, 3, 7, and 10 days for MAR-FISH analysis. The samples were fixed for 3 h at 4°C by adding 5 ml of 8% paraformaldehyde, which resulted in a final paraformaldehyde concentration of 4%. Subsequently, the samples were centrifuged at 10,000 × g for 8 min, washed three times with 1 ml of PBS to remove excess soluble radioactive compounds, and stored in 50% ethanol in PBS at -18°C. After the fixation and washing steps, the samples were spotted on gelatin-coated glass coverslips as described elsewhere (14, 18).

Liquid scintillation counting. The degradation of ¹⁴C-labeled microbial products derived from nitrifying bacteria by heterotrophic bacteria was also confirmed by determining the ¹⁴C contents in the biomass and culture medium fractions by liquid scintillation counting during incubation. The ¹⁴C content in the biomass fraction was determined after preparation as follows. One milliliter of a culture sample was centrifuged at 10,000 × g for 8 min and washed three times with 1 ml of PBS. The harvested biomass was resuspended in 1 ml of tap water, and a 0.1-ml aliquot was then added to 3 ml of scintillation liquid (Ultima Gold XR; Packard BioScience Co., Meriden, Conn.). After the sample was thoroughly mixed and stored at room temperature for 3 h, the radioactivity was determined with an Aloka model LSC-1000 liquid scintillation counter as recommended by the manufacturer. The total ¹⁴C in the culture samples (biomass plus culture medium) was directly subjected to the liquid scintillation counting procedure. The ¹⁴C content of the culture medium (bulk) was obtained by subtracting the ¹⁴C content in the biomass from the total ¹⁴C content in the culture samples (biomass plus culture medium).

Oligonucleotide probes and FISH. The 16S and 23S rRNA-targeted oligonucleotide probes and the hybridization conditions used in this study are shown in Table 1. The probes were labeled with fluorescein isothiocyanate (FITC) and tetramethylrhodamine 5-isothiocyanate (TRITC). Dehydration and FISH were performed by using the procedure described by Amann (2) and Okabe et al. (27). Simultaneous hybridizations with probes that required different stringency conditions were performed by using a successive hybridization procedure; hybridization with the probe requiring a higher stringency was performed first, and then

hybridization with the probe requiring a lower stringency was performed (42). Some samples were simultaneously stained with 4',6'-diamidino-2-phenylindole (DAPI) ($1\ \mu\text{g ml}^{-1}$) for 10 min in the dark to determine total cell numbers. The slides were then rinsed briefly with double-distilled H_2O , allowed to air dry, and mounted in antifading solution (Slow fade light; Molecular Probes, Eugene, Oreg.).

For quantitative determination of the microbial composition in the autotrophic nitrifying biofilm, the surface fractions of the specific probe-hybridized cell area and the mixed EUB338 (EUB338, EUB338 II, and EUB338 III) probe-hybridized cells (total biomass) were determined after simultaneous in situ hybridizations with various probe sets. The average surface fraction was determined from at least 10 representative laser scanning microscopy projection images obtained from each of duplicate biofilm cultures by using image analysis software provided by Zeiss (16, 27).

Autoradiographic procedure. Microautoradiography was performed directly on a coverslip as described by Lee et al. (18). After the FISH procedure, an autoradiographic liquid film emulsion (LM-1; Amersham Biosciences, Little Chalfont, United Kingdom) was used. The optimal exposure time was previously determined to be 2 days.

Microscopy and enumeration by MAR-FISH. A model LSM510 confocal laser scanning microscope (Carl Zeiss, Oberkochen, Germany) equipped with an Ar ion laser (458 and 488 nm) and two HeNe ion lasers (543 nm) was used. The formation of silver grains in the autoradiographic film was observed by using the transmission mode of the system. All images were combined and processed with the standard software package provided with the LSM510 and were printed by using Photoshop 5.0 (Adobe Systems Inc., Mountain View, Calif.).

A MAR-positive cell was defined as a cell covered with more than five silver grains in this study. The numbers of MAR-positive cells and total probe-hybridized cells were determined by directly counting at least 500 silver grain-covered cells in randomly chosen microscopic fields of a few slides prepared from each sample.

Analytical measurements. Concentrations of NH_4^+ , NO_2^- , and NO_3^- were determined by ion-exchange chromatography using a DX-100 (DIONEX, Osaka, Japan) with an IonPac CS3 cation column and an IonPac AS9 anion column after filtration with $0.2\text{-}\mu\text{m}$ -pore-size membranes.

RESULTS

Community composition in the biofilm. The microbial community composition in the autotrophic nitrifying biofilm was first analyzed by FISH with various sets of oligonucleotide probes (Table 1 and Fig. 1). The total bacteria detected with the mixed EUB338 probes accounted for $77.0\% \pm 7.0\%$ of the total DAPI counts. Members of the ammonia-oxidizing bacteria (AOB) (detected with probe Nso190) and the nitrite-oxidizing bacteria (NOB) (the *Nitrospira* phylum plus the genus *Nitrobacter* belonging to the α -*Proteobacteria*) accounted for 70.0% of the total bacteria detected with the mixed EUB338 probes. The ratio of total nitrifiers (AOB plus NOB) to all heterotrophs was approximately 2:1 in the biofilm.

^{14}C labeling of nitrifying bacteria. In order to radiolabel only nitrifying bacteria in the biofilm community, the homogenized biofilm samples were incubated in the synthetic nutrient medium with ^{14}C bicarbonate as a carbon source for 6 h. In preliminary experiments, we confirmed that the combination of 6 h of incubation and a 2-day exposure time was the optimum conditions for detection of enough radioactivity incorporated into nitrifying bacterial cells without substrate cross-feeding from nitrifying bacteria to heterotrophic bacteria. MAR-FISH analysis revealed that almost 100% of the AOB and NOB were strongly MAR positive (Fig. 2A), but no MAR-positive heterotrophic bacteria were detected (Fig. 2B). Approximately $1\ \text{mM}$ NH_4^+ was consumed, and an equivalent amount of NO_2^- and NO_3^- was produced during 6 h of incubation, indicating that AOB and NOB were both active. Liquid scintillation counting revealed that the nitrifying bacteria took

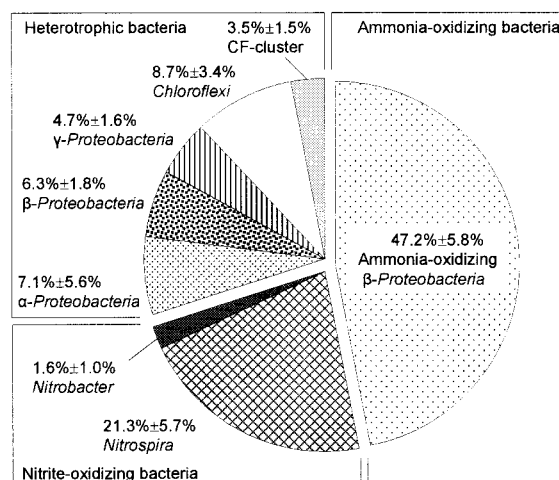


FIG. 1. Microbial community composition of the autotrophic nitrifying biofilm as quantitatively determined by FISH. The α -*Proteobacteria* is the bacterial group that hybridized with probe ALF968, excluding the genus *Nitrobacter* that hybridized with probe NIT3. The β -*Proteobacteria* is the bacterial group that hybridized with probe BET42a, excluding the ammonia-oxidizing bacteria that hybridized with probe Nso190. The number of cells that hybridized with a given probe in each microscopic field was expressed as a percentage of the total surface area of bacteria that hybridized with mixed probes EUB338, EUB338 II, and EUB338 III. The values are the means \pm standard errors of duplicate samples.

up ca. 35% of the ^{14}C bicarbonate added for 6 h of incubation. The control experiments with pasteurized biomass did not show detectable uptake of radioactivity and MAR-positive cells (data not shown). This result indicated that ^{14}C bicarbonate was truly incorporated into nitrifying bacteria rather than adsorbed on the cell surface.

Fate of ^{14}C incorporated into nitrifying bacteria. The total number of cells detected by DAPI direct counting decreased slightly from $4.8 \times 10^8 \pm 1.1 \times 10^8$ cells ml^{-1} at day 0 to $3.1 \times 10^8 \pm 0.6 \times 10^8$ cells ml^{-1} at day 10 in the culture without NH_4^+ addition. In the culture with NH_4^+ addition, the total number of cells was relatively constant ($4.8 \times 10^8 \pm 1.1 \times 10^8$ cells ml^{-1} to $5.3 \times 10^8 \pm 1.0 \times 10^8$ cells ml^{-1}). In addition, the percentages of domain *Bacteria* cells detected with the mixed EUB probes (EUB338, EUB338 II, and EUB338 III) relative to the number of DAPI-stained cells after 10 days of incubation were about $85.6\% \pm 7.8\%$ and $70.4\% \pm 6.5\%$ in the cultures with and without NH_4^+ addition, respectively. This indicated that more active cells were present in the culture to which NH_4^+ was added. However, no significant change in the community composition of the heterotrophic bacteria was observed in both cultures during the 10-day incubation (data not shown). On the other hand, the populations of AOB and NOB decreased with time in the culture without NH_4^+ addition due to the absence of the energy source, whereas both populations were slightly increased in the culture with NH_4^+ addition (Table 2). Furthermore, the concentration of NH_4^+ decreased with time, and the equivalent amount of NO_3^- was simultaneously produced with no accumulation of NO_2^- , indicating that both types of nitrifying bacteria (AOB and NOB) actively oxidized NH_4^+ and NO_2^- and grew in the culture to which NH_4^+ was added during the 10-day incubation.

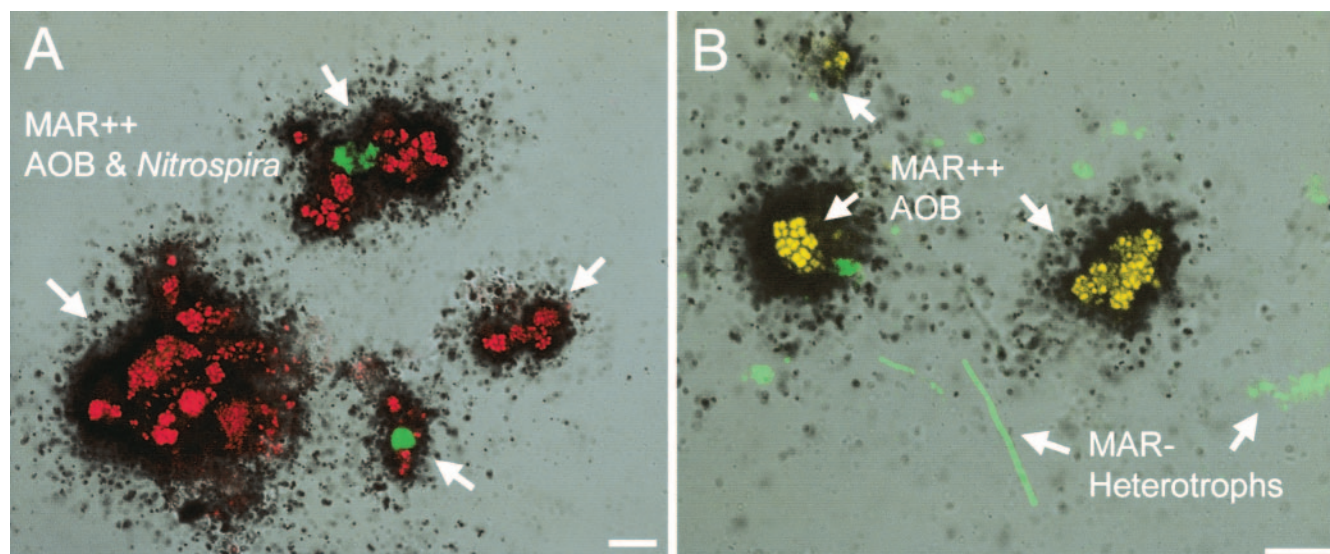


FIG. 2. Combined MAR and FISH images of homogenized autotrophic nitrifying biofilms. Only nitrifying bacteria were successfully radiolabeled by incubation with [^{14}C]bicarbonate for 6 h (A). Heterotrophic bacteria were all MAR negative under these incubation conditions (B). In situ hybridizations were performed with a combination of FITC-labeled Ntspa662 and TRITC-labeled Nso190 (red) (A) and with a combination of FITC-labeled mixed EUB338 probes (green) and TRITC-labeled Nso190 (red) (B). Bars = 10 μm . MAR++, strongly MAR positive; MAR-, MAR negative.

^{14}C contents in culture samples. The ^{14}C contents in samples (biomass plus culture medium) from cultures with and without NH_4^+ addition at day 0 and day 10 were determined by liquid scintillation counting and compared. The majority (91 and 88%, respectively) of the ^{14}C was associated with the biomass fraction in both culture samples, and only about 10% of the ^{14}C -labeled material was released into the bulk fraction at day 0. After 10 days of incubation, the ^{14}C contents in the biomass (^{14}C -labeled nitrifying bacteria plus heterotrophic bacteria) decreased from 88% to 51% in the culture without NH_4^+ addition and from 91% to 78% in the culture with NH_4^+ addition.

Uptake of ^{14}C -labeled microbial products derived from nitrifying bacteria by heterotrophic bacteria. The coexisting heterotrophic bacteria that could incorporate ^{14}C -labeled microbial products derived from nitrifying bacteria were directly visualized by MAR-FISH (Fig. 3) and quantitatively analyzed (Fig. 4). On day 0 of incubation, approximately 100% of the AOB and NOB (*Nitrobacter* and *Nitrospira*) cells were strongly MAR positive in both cultures (Fig. 2A), but no MAR-positive heterotrophic bacteria were detected (Fig. 2B). For the member of the *Chloroflexi* that hybridized with the GNSB-941 and CFX1223 probes, the percentage of probe-hybridized cells that

simultaneously took up ^{14}C -labeled microbial products derived from nitrifying bacteria significantly increased to more than 50% within the first 3 days and remained at this level in the culture without NH_4^+ addition (Fig. 3A and 4A). On the other hand, only 20% of the *Chloroflexi* cells were weakly MAR positive in the culture with NH_4^+ addition (Fig. 3B and 4A). The percentage of probe CF319a/b-hybridized cells (members of the *Cytophaga-Flavobacterium* [CF] cluster) that simultaneously were strongly MAR positive gradually increased to 55% at day 10 in the culture with NH_4^+ addition (Fig. 3C and 4B), whereas the fraction was unchanged (around 20%) and the MAR signal was weak in the culture without NH_4^+ addition (Fig. 3D and 4B). More than 50% of the α -*Proteobacteria* cells that hybridized with probe ALF968 (excluding the genus *Nitrobacter* cells that hybridized with probe NIT3) became MAR positive within 1 day in both cultures (Fig. 4C), and thereafter this fraction was unchanged. About 30% of the γ -*Proteobacteria* cells that hybridized with probe GAM42a also incorporated ^{14}C -labeled microbial products derived from nitrifying bacteria in both cultures (Fig. 4D). In contrast, less than 7% of the β -*Proteobacteria* cells that hybridized with probe BET42a were weakly MAR positive in both cultures (Fig. 4E). These results clearly demonstrated that [^{14}C]bicarbonate originally incorporated into nitrifying bacterial cells could be released and subsequently utilized by the coexisting heterotrophic bacteria.

TABLE 2. Changes in populations of nitrifying bacteria (AOB and NOB) during 10 days of incubation as determined by FISH

Incubation time (days)	AOB (10^7 cells ml^{-1})		NOB (10^7 cells ml^{-1})	
	With NH_4^+ addition	Without NH_4^+ addition	With NH_4^+ addition	Without NH_4^+ addition
0	2.2 \pm 0.4 ^a	2.1 \pm 0.3	1.0 \pm 0.3	1.1 \pm 0.3
3	2.1 \pm 0.4	1.6 \pm 0.2	0.9 \pm 0.1	0.5 \pm 0.1
10	2.6 \pm 0.3	1.5 \pm 0.3	1.6 \pm 0.4	0.4 \pm 0.3

^a The values are means \pm standard errors.

DISCUSSION

The MAR-FISH technique used in this study was very powerful for tracking the fate of radioactivity originally incorporated into nitrifying bacterial cells. Although various radioactive substrates have been used for microautoradiographic studies (6, 12, 14, 16, 18, 24, 25, 30), we directly labeled nitrifying

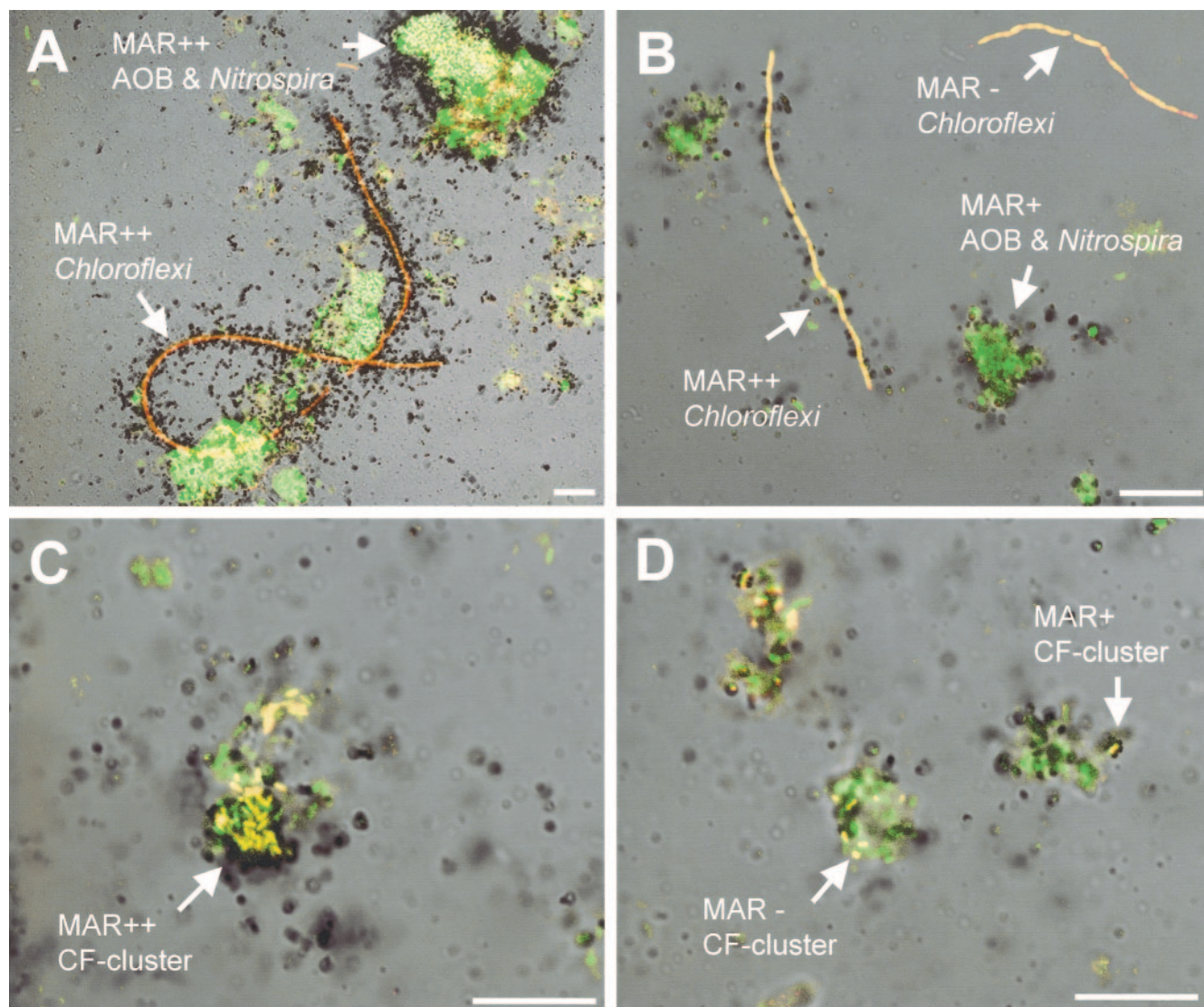


FIG. 3. (A and B) Combined MAR and FISH images showing uptake of ^{14}C -labeled microbial products derived from nitrifying bacteria by *Chloroflexi* in the cultures without NH_4^+ (A) and with NH_4^+ (B) at day 3. (C and D) Uptake of ^{14}C -labeled microbial products derived from nitrifying bacteria by the members of CF cluster in the cultures with NH_4^+ (C) and without NH_4^+ (D) at day 10. In situ hybridizations were performed with a combination of the FITC-labeled mixed EUB338 probes (green) and TRITC-labeled probes GNSB-941 and CFX1223 (A and B) and with a combination of FITC-labeled mixed EUB338 probes (green) and probe CF319a/b (C and D) (red). Bars = 10 μm . MAR++, strongly MAR positive; MAR+, weakly MAR positive; MAR-, MAR negative.

ifying bacterial cells with ^{14}C bicarbonate and used it as a substrate for the first time to investigate the substrate cross-feeding from nitrifying bacteria to heterotrophic bacteria in this study. We successfully demonstrated that microbial products derived from nitrifying bacteria were subsequently utilized by different phylogenetic groups of heterotrophic bacteria, which was directly visualized and quantified by MAR-FISH at the single-cell resolution level for the first time.

^{14}C labeling of nitrifying bacteria. To prepare ^{14}C -labeled nitrifying bacteria, it is important to select the right combination of ^{14}C bicarbonate concentration and incubation time which provides nitrifying bacteria with enough time to incorporate ^{14}C bicarbonate but not to cross-feed ^{14}C -labeled microbial products to heterotrophic bacteria. We conducted sev-

eral sets of preliminary experiments and found that the combination of a specific radioactivity of 10 $\mu\text{Ci mmol}^{-1}$ (corresponding to a ^{14}C bicarbonate concentration of 35 μM), 6 h of incubation, and 2 days of exposure was the optimum combination for this purpose. However, when the incubation time was increased to more than 24 h (and the concentration of ^{14}C bicarbonate and the exposure time were the same), we started to observe ^{14}C cross-feeding. It has been shown that most, if not all, heterotrophic bacteria can assimilate CO_2 in various carboxylation reactions during biosynthesis (often 5 to 10% of the biomass carbon produced) (36). However, under the incubation conditions for MAR used in this study, heterotrophic bacteria were always MAR negative, indicating that there was no significant uptake of $^{14}\text{CO}_2$. This was probably

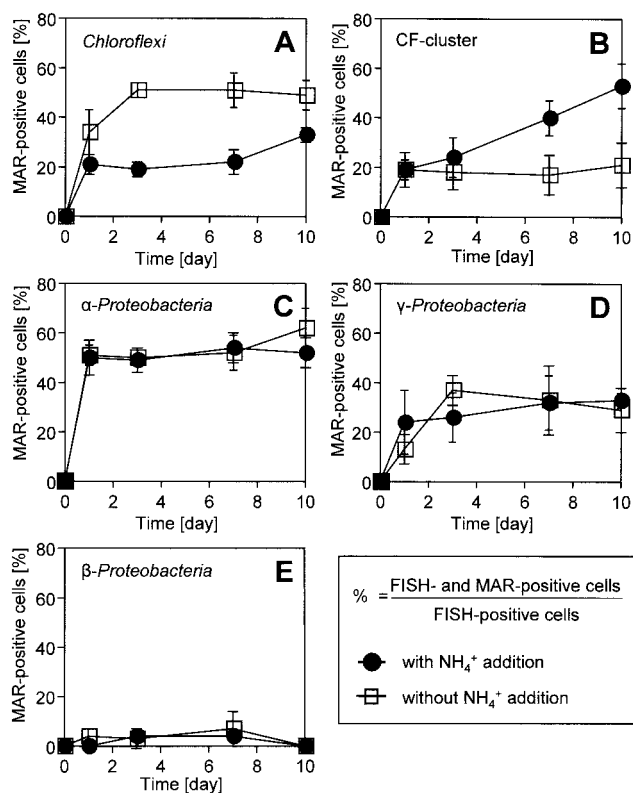


FIG. 4. Patterns of uptake of ^{14}C -labeled microbial products derived from nitrifying bacteria by *Chloroflexi* that hybridized with probes GNSB-941 and CFX1223 (A), by the members of the CF cluster that hybridized with probe CF319a/b (B), by α -*Proteobacteria* that hybridized with probe ALF968 (excluding the probe NIT3-hybridized genus *Nitrobacter*) (C), by γ -*Proteobacteria* that hybridized with probe GAM42a (D), and by β -*Proteobacteria* that hybridized with probe BET42a (excluding the probe Nso190-hybridized AOB) (E). The fractions of probe-hybridized and MAR-positive cells that incorporated ^{14}C -labeled microbial products derived from nitrifying bacteria were expressed as percentages of the total specific probe-hybridized cells. The error bars indicate the standard errors of duplicate samples.

because we incubated the biofilm samples with low concentrations of [^{14}C]bicarbonate (35 μM) and did not add any external organic carbon substrates for heterotrophic bacteria. Therefore, we could ignore the direct CO_2 incorporation by heterotrophic bacteria in this study.

Fate of [^{14}C]bicarbonate incorporated into nitrifying bacteria. Nitrifying bacteria are known to produce relatively large amounts of soluble microbial products, which consist of utilization-associated products (UAP) and biomass-associated products (BAP) (3, 34, 35). It is also known that nitrifying bacteria produce large amounts of extracellular polymeric substances (EPS). The details of soluble microbial product and EPS compositions and their production kinetics are not well known at present. To differentiate UAP from BAP, we conducted ^{14}C -tracing experiments under two different culture conditions with and without addition of NH_4^+ (an energy source for nitrifying bacteria). Based on the experimental results for the numbers of AOB and NOB, NH_4^+ and NO_2^- consumption, and the ^{14}C contents in the culture samples during the 10-day incubation, we concluded that nitrifying bac-

teria (AOB and NOB) actively utilized substrates (i.e., NH_4^+ and NO_2^-) and grew in the culture with NH_4^+ addition, which led to formation of mainly substrate utilization (growth)-associated products and EPS. On the other hand, nitrifying bacteria died and decayed in the culture without NH_4^+ addition, which led to the formation of mainly BAP (i.e., structural cell components and EPS). Although the composition and concentrations of UAP, BAP, and EPS were not measured in this study, this does not negate our conclusions.

Most phylogenetic groups of heterotrophic bacteria except the β -*Proteobacteria* showed uptake of ^{14}C -labeled microbial products, as shown in Fig. 4. MAR-FISH analysis revealed that more than 50% of the members of the *Chloroflexi* took up ^{14}C -labeled microbial products within the first 3 days in the culture without NH_4^+ addition, but they did not show strong uptake in the culture with NH_4^+ addition (Fig. 4A). To the contrary, the percentage of a member of the MAR-positive bacteria belonging to the CF cluster gradually increased to 55% at day 10 in the culture with NH_4^+ addition but not in the culture without NH_4^+ addition (Fig. 4B). Based on these results, we speculated that the member of the *Chloroflexi* preferentially utilized the decaying nitrifying bacteria cell materials, whereas the member of the CF cluster utilized substrate utilization (growth)-associated products, including EPS or the secondary metabolites of the decayed biomass. It is, however, difficult to differentiate between primary substrate-consuming heterotrophic groups that live on the secretions or lysis products (i.e., structural cell components and EPS) of nitrifying bacteria and the groups that live on the metabolites of these primary consumers. Kindaichi et al. (16) previously demonstrated that despite their low abundance in the biofilm community, the members of the *Chloroflexi* and the CF cluster were only two heterotrophic groups that could utilize [^{14}C]NAG added as a model substrate of structural cell components. Depolymerization of cell wall peptidoglycan (i.e., cell lysis) liberates NAG, which could provide a main pool of organic matter in the autotrophic nitrifying biofilm. The members of the *Chloroflexi* and possibly the CF cluster could play an important role in the degradation of dead nitrifying and heterotrophic bacterial cells. The members of the *Chloroflexi* detected in our biofilm were filamentous bacteria and were tightly associated with the nitrifying bacterial clusters. Based on 16S rRNA gene analysis, all our clone sequences were affiliated with *Chloroflexi* subdivision I (13), which contained the most diverse environmental clones, but only a few isolated cultures (39, 40). The first isolates in subdivision I, *Anaerolinea thermophila* and *Caldilinea aerophila*, could preferentially utilize a complex yeast extract-like substrate but not acetate (39, 40). In addition, it has been reported that some members of the CF cluster can preferentially degrade various refractory biomacromolecules, such as cellulose, chitin, and proteins, which should have been abundant in the biofilm (29). All these previous studies support the experimental results obtained in this study. However, the in situ spatial organization of the microbial community in the biofilm was disturbed in this study because homogenization was essential for the quantitative MAR-FISH analysis. It is possible that under nondisturbed in situ biofilm conditions the uptake behavior of the various phylogenetic groups is different from the uptake behavior found in this study. To determine nondisturbed and localized in situ

substrate uptake patterns of nitrifying bacteria and heterotrophic bacteria in biofilms at the community level, the MAR-FISH technique should be directly applied to thin sections of the biofilm after cryosectioning in the future.

The members of the α -*Proteobacteria* and γ -*Proteobacteria* rapidly became MAR positive within the first few days of incubation. This is probably because they utilized easily degradable soluble microbial products (e.g., amino acids and fatty acids) that were released from nitrifying bacterial cells into the bulk liquid during sample preparation (centrifugation, washing, and resuspension). The radioactivity in the bulk liquid (approximately 10% of the total ¹⁴C content) rapidly decreased within 3 days in both cultures (data not shown), which corresponded well with the rapid increases in the numbers of MAR-positive cells belonging to the α - and γ -*Proteobacteria* but not the β -*Proteobacteria*. This result was also consistent with the previous finding that members of the α -*Proteobacteria* and γ -*Proteobacteria* preferentially utilized low-molecular-weight organic matter (i.e., acetic acid and amino acids) but not NAG (16). Furthermore, Cottrell and Kirchman (6) have also reported that the α - and γ -proteobacterial populations in marine environments predominantly utilized amino acids. The members of the α - and γ -*Proteobacteria* and the CF cluster are in general abundant in low-organic-load environments (e.g., less polluted rivers and marine environments) (15, 17), whereas the β -*Proteobacteria* is the dominant group in heavily polluted rivers (5) and in activated sludge systems having relatively high organic carbon loads (44). In this study, the β -*Proteobacteria* accounted for only 6% of the autotrophic nitrifying biofilm community and did not show significant uptake of radioactivity derived from nitrifying bacteria. This might suggest that they were less active and competitive in low-organic-load environments.

In conclusion, the fate of the radioactivity of [¹⁴C]bicarbonate originally incorporated into nitrifying bacteria was successfully determined by using the MAR-FISH approach. The uptake patterns for ¹⁴C-labeled microbial products derived from nitrifying bacteria differed greatly among the different phylogenetic groups. In complex multispecies biofilms, exchange of substrates among different phylogenetic groups is the most important ecophysiological interaction, which cannot be determined in individual pure-culture studies.

ACKNOWLEDGMENTS

We gratefully thank the Central Institute of Isotope Science, Hokkaido University, for providing the facilities for the isotope experiments.

This research was supported in part by grant-in-aid 09750627 for developmental scientific research from the Ministry of Education, Science and Culture of Japan. This study was also carried out as a part of "The Project for Development of Technologies for Analyzing and Controlling the Mechanism of Biodegrading and Processing," which was entrusted by the New Energy and Industrial Technology Development Organization (NEDO), Japan.

REFERENCES

- Amann, R. I., L. Krumholz, and D. A. Stahl. 1990. Fluorescent-oligonucleotide probing of whole cells for determinative, phylogenetic, and environmental studies in microbiology. *J. Bacteriol.* **172**:762–770.
- Amann, R. I. 1995. In situ identification of micro-organisms by whole cell hybridization with rRNA-targeted nucleic acid probes, p. 1–15. In A. D. L. Akkerman, J. D. van Elsas, and F. J. de Bruijn (ed.), *Molecular microbial ecology manual*. Kluwer Academic Publishers, Dordrecht, The Netherlands.
- Barker, D. J., and D. C. Stuckey. 1999. A review of soluble microbial products (SMP) in wastewater treatment systems. *Water Res.* **33**:3063–3082.
- Björnsson, L., P. Hugenholtz, G. W. Tyson, and L. L. Blackall. 2002. Filamentous *Chloroflexi* (green non-sulfur bacteria) are abundant in wastewater treatment processes with biological nutrient removal. *Microbiology* **148**:2309–2318.
- Brümmer, I. H. M., W. Fehr, and I. Wagner-Döbler. 2000. Biofilm community structure in polluted rivers: abundance of dominant phylogenetic groups over a complete annual cycle. *Appl. Environ. Microbiol.* **66**:3078–3082.
- Cottrell, M. T., and D. L. Kirchman. 2000. Natural assemblages of marine proteobacteria and members of the *Cytophaga-Flavobacter* cluster consuming low- and high-molecular-weight dissolved organic matter. *Appl. Environ. Microbiol.* **66**:1692–1697.
- Daims, H., A. Brühl, R. Amann, K.-H. Schleifer, and M. Wagner. 1999. The domain-specific probe EUB338 is insufficient for the detection of all bacteria: development and evaluation of a more comprehensive probe set. *Syst. Appl. Microbiol.* **22**:434–444.
- Daims, H., J. L. Nielsen, P. H. Nielsen, K.-H. Schleifer, and M. Wagner. 2001. In situ characterization of *Nitrospira*-like nitrite-oxidizing bacteria active in wastewater treatment plants. *Appl. Environ. Microbiol.* **67**:5273–5284.
- Gich, F., J. Garcia-Gil, and J. Overmann. 2001. Previously unknown and phylogenetically diverse members of the green nonsulfur bacteria are indigenous to freshwater lakes. *Arch. Microbiol.* **177**:1–10.
- Gieseke, A., L. Bjerrum, M. Wagner, and R. Amann. 2003. Structure and activity of multiple nitrifying bacterial populations co-existing in a biofilm. *Environ. Microbiol.* **5**:355–369.
- Gray, N. D., R. Howarth, A. Rowan, R. W. Pickup, J. G. Jones, and I. M. Head. 1999. Natural communities of *Achromatium oxaliferum* comprise genetically, morphologically, and ecologically distinct subpopulations. *Appl. Environ. Microbiol.* **65**:5089–5099.
- Gray, N. D., R. Howarth, R. W. Pickup, J. G. Jones, and I. M. Head. 2000. Use of combined microautoradiography and fluorescence in situ hybridization to determine carbon metabolism in mixed natural communities of uncultured bacteria from the genus *Achromatium*. *Appl. Environ. Microbiol.* **66**:4518–4522.
- Hugenholtz, P., C. Pitulle, K. L. Hershberger, and N. R. Pace. 1998. Novel division level bacterial diversity in a Yellowstone hot spring. *J. Bacteriol.* **180**:366–376.
- Ito, T., J. L. Nielsen, S. Okabe, Y. Watanabe, and P. H. Nielsen. 2002. Phylogenetic identification and substrate uptake patterns of sulfate-reducing bacteria inhabiting an oxic-anoxic sewer biofilm determined by combining microautoradiography and fluorescent in situ hybridization. *Appl. Environ. Microbiol.* **68**:356–364.
- Kenzaka, T., N. Yamaguchi, K. Tani, and M. Nasu. 1998. rRNA-targeted fluorescent in situ hybridization analysis of bacterial community structure in river water. *Microbiology* **144**:2085–2093.
- Kindaichi, T., T. Ito, and S. Okabe. 2004. Eco-physiological interaction between nitrifying bacteria and heterotrophic bacteria in autotrophic nitrifying biofilms as determined by MAR-FISH. *Appl. Environ. Microbiol.* **70**:1641–1650.
- Kirchman, D. L. 2002. The ecology of *Cytophaga-Flavobacteria* in aquatic environments. *FEMS Microbiol. Ecol.* **39**:91–100.
- Lee, N., P. H. Nielsen, K. H. Andreasen, S. Juretschko, J. L. Nielsen, K.-H. Schleifer, and M. Wagner. 1999. Combination of fluorescent in situ hybridization and microautoradiography—a new tool for structure-function analyses in microbial ecology. *Appl. Environ. Microbiol.* **65**:1289–1297.
- Manz, W., R. Amann, W. Ludwig, M. Wagner, and K.-H. Schleifer. 1992. Phylogenetic oligodeoxynucleotide probes for the major subclasses of proteobacteria: problems and solutions. *Syst. Appl. Microbiol.* **15**:593–600.
- Manz, W., R. Amann, W. Ludwig, M. Vancanneyt, and K.-H. Schleifer. 1996. Application of a suite of 16S rRNA-specific oligonucleotide probes designed to investigate bacteria of the phylum cytophaga-flavobacter-bacterioides in the natural environment. *Microbiology* **142**:1097–1106.
- Mobarry, B. K., M. Wagner, V. Urbain, B. E. Rittmann, and D. A. Stahl. 1996. Phylogenetic probes for analyzing abundance and spatial organization of nitrifying bacteria. *Appl. Environ. Microbiol.* **62**:2156–2162.
- Neef, A. 1997. Anwendung der *in situ* Einzelzell-Identifizierung von Bakterien zur Populationsanalyse in komplexen mikrobiellen Biozönosen. Doctoral thesis. Technische Universität München, Munich, Germany.
- Nielsen, J. L., D. Christensen, M. Kloppenborg, and P. H. Nielsen. 2003. Quantification of cell-specific substrate uptake by probe-defined bacteria under in situ conditions by microautoradiography and fluorescence in situ hybridization. *Environ. Microbiol.* **5**:202–211.
- Nielsen, P. H., M. Aquino de Muro, and J. L. Nielsen. 2000. Studies on the in situ physiology of *Thiothrix* spp. present in activated sludge. *Environ. Microbiol.* **2**:389–398.
- Nielsen, P. H., P. Roslev, T. E. Dueholm, and J. L. Nielsen. 2002. *Microthrix parvicella*, a specialized lipid consumer in anaerobic-aerobic activated sludge plants. *Water Sci. Technol.* **46**:73–80.
- Okabe, S., T. Itoh, H. Satoh, and Y. Watanabe. 1999. Analyses of spatial distributions of sulfate-reducing bacteria and their activity in aerobic wastewater biofilms. *Appl. Environ. Microbiol.* **65**:5107–5116.

27. Okabe, S., H. Satoh, and Y. Watanabe. 1999. In situ analysis of nitrifying biofilms as determined by in situ hybridization and the use of microelectrodes. *Appl. Environ. Microbiol.* **65**:3182–3191.
28. Okabe, S., H. Naitoh, H. Satoh, and Y. Watanabe. 2002. Structure and function of nitrifying biofilms as determined by molecular techniques and the use of microelectrodes. *Water Sci. Technol.* **46**:233–241.
29. O'Sullivan, L. A., A. J. Weightman, and J. C. Fry. 2002. New degenerate *Cytophaga-Flexibacter-Bacteroides*-specific 16S ribosomal DNA-targeted oligonucleotide probes reveal high bacterial diversity in River Taff epilithon. *Appl. Environ. Microbiol.* **68**:201–210.
30. Ouverney, C. C., and J. A. Fuhrman. 1999. Combined microautoradiography-16S rRNA probe technique for determination of radioisotope uptake by specific microbial cell types in situ. *Appl. Environ. Microbiol.* **65**:1746–1752.
31. Ouverney, C. C., and J. A. Fuhrman. 2000. Marine planktonic archaea take up amino acids. *Appl. Environ. Microbiol.* **66**:4829–4833.
32. Pynaert, K., B. F. Smets, S. Wyffels, D. Beheydt, S. D. Siciliano, and W. Verstraete. 2003. Characterization of an autotrophic nitrogen-removing biofilm from a highly loaded lab-scale rotating biological contactor. *Appl. Environ. Microbiol.* **69**:3626–3635.
33. Riemann, L., and F. Azam. 2002. Widespread *N*-acetyl-D-glucosamine uptake among pelagic marine bacteria and its ecological implications. *Appl. Environ. Microbiol.* **68**:5554–5562.
34. Rittmann, B. E., J. M. Regan, and D. A. Stahl. 1994. Nitrification as a source of soluble organic substrate in biological treatment. *Water Sci. Technol.* **30**:1–8.
35. Rittmann, B. E., and P. L. McCarty. 2001. Microbial kinetics: soluble microbial products, p. 176–178. In B. E. Rittmann and P. L. McCarty (ed.), *Environmental biotechnology: principles and applications*. McGraw Hill, New York, N.Y.
36. Roslev, P., M. B. Larsen, D. Jørgensen, and M. Hesselsoe. 2004. Use of heterotrophic CO₂ assimilation as a measure of metabolic activity in planktonic and sessile bacteria. *J. Microbiol. Methods* **59**:381–393.
37. Schembri, M. A., K. Kjærsgaard, and P. Klemm. 2003. Global gene expression in *Escherichia coli* biofilms. *Mol. Microbiol.* **48**:253–267.
38. Schramm, A., L. H. Larsen, N. P. Revsbech, N. B. Ramsing, R. Amann, and K.-H. Schleifer. 1996. Structure and function of a nitrifying biofilm as determined by in situ hybridization and the use of microelectrodes. *Appl. Environ. Microbiol.* **62**:4641–4647.
39. Sekiguchi, Y., Y. Kamagata, K. Nakamura, A. Ohashi, and H. Harada. 1999. Fluorescence in situ hybridization using 16S rRNA-targeted oligonucleotides reveals localization of methanogens and selected uncultured bacteria in mesophilic and thermophilic sludge granules. *Appl. Environ. Microbiol.* **65**:1280–1288.
40. Sekiguchi, Y., T. Yamada, S. Hanada, A. Ohashi, H. Harada, and Y. Kamagata. 2003. *Anaerolinea thermophila* gen. nov., sp. nov. and *Caldilinea aerophila* gen. nov., sp. nov., novel filamentous thermophiles that represent a previously uncultured lineage of the domain Bacteria at the subphylum level. *Int. J. Syst. Evol. Microbiol.* **53**:1843–1851.
41. Tolker-Nielsen, T., and S. Molin. 2000. Spatial organization of microbial biofilm communities. *Microb. Ecol.* **40**:75–84.
42. Wagner, M., R. I. Amann, P. Kampfer, B. Assmus, A. Hartmann, P. Hutzler, N. Springer, and K.-H. Schleifer. 1994. Identification and in situ detection of gram-negative filamentous bacteria in activated sludge. *Syst. Appl. Microbiol.* **17**:405–417.
43. Wagner, M., G. Rath, H. P. Kooops, J. Flood, and R. Amann. 1996. In situ analysis of nitrifying bacteria in sewage treatment plants. *Water Sci. Technol.* **34**:237–244.
44. Wagner, M., and A. Loy. 2002. Bacterial community composition and function in sewage treatment systems. *Curr. Opin. Biotechnol.* **13**:218–227.